



TOURIST ACCOMMODATION AUSTRALIA

EMBARGO: 11:30AM (CANBERRA TIME) FRI 2 JULY 1999

MARCH QTR KEY FIGURES

LICENSED HOTELS	Mar Qtr 98	Mar Qtr 99	change
Rooms available (no.)	69 124	71 637	3.6 %
Room nights occupied ('000)	3 816.8	4 003.5	4.9 %
Room occupancy rate (%)	61.6	62.4	0.8 pts
Takings from accommodation (\$'000)	505 731	514 165	1.7 %

MOTELS AND GUEST HOUSES	Mar Qtr 98	Mar Qtr 99	change
Rooms available (no.)	83 427	84 614	1.4 %
Room nights occupied ('000)	4 033.8	4 083.2	1.2 %
Room occupancy rate (%)	53.9	53.7	-0.2 pts
Takings from accommodation (\$'000)	314 800	322 196	2.3 %

SERVICED APARTMENTS	Mar Qtr 98	Mar Qtr 99	change
Rooms available (no.)	21 643	27 610	27.6 %
Room nights occupied ('000)	1 205.5	1 499.1	24.4 %
Room occupancy rate (%)	62.4	60.6	-1.8 pts
Takings from accommodation (\$'000)	134 968	166 699	23.5 %

MARCH QTR KEY POINTS

AVAILABLE CAPACITY CONTINUES TO RISE

- Growth in available room capacity continued in the March quarter 1999 being 5.5% compared with the March quarter 1998 for establishments with 15 or more rooms or units. By accommodation type, the capacity increases were 3.6% for licensed hotels, 1.4% for motels and guest houses and 27.6% for serviced apartments.

MIXED OCCUPANCY RESULTS

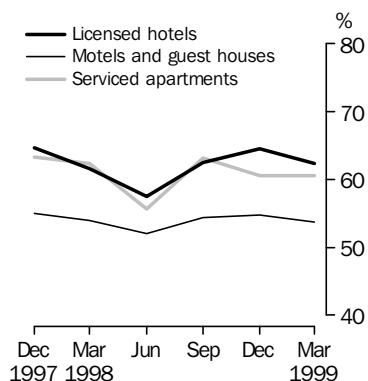
- For licensed hotels, the rate of growth in demand outpaced the rate at which capacity increased, resulting in a 0.8 percentage point rise in room occupancy rate to 62.4%. The room occupancy rate fell by 1.8 percentage points to 60.6% for serviced apartments and also fell marginally for motels and guest houses to 53.7%.

ACCOMMODATION TAKINGS

- Takings from accommodation increased in aggregate for each accommodation type in the March quarter 1999 compared with the March quarter 1998. Average takings per room night occupied fell from \$133 to \$128 for licensed hotels and from \$112 to \$111 for serviced apartments, but rose for motels and guest houses from \$78 to \$79.

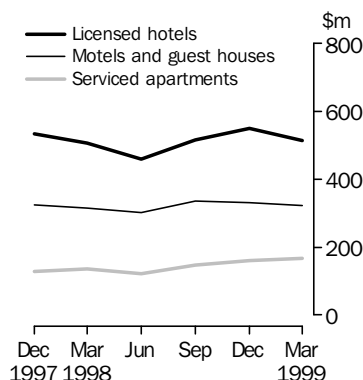
Occupancy rates

Quarterly
Australia



Accommodation takings

Quarterly
Australia



- For further information about these and related statistics, contact Paull Hoffmann on 07 3222 6201, or any ABS Office shown on the back cover of this publication.

NOTES

FORTHCOMING ISSUES

ISSUE

RELEASE DATE

June Quarter 1999

24 September 1999

CHANGES IN THIS ISSUE

As advised in the December quarter 1997 and March quarter 1998 issues of this publication, the Survey of Tourist Accommodation has been substantially revised commencing with the March quarter 1998. See the Explanatory Notes for further details.

Data are now classified by Tourism Regions as defined by the relevant State and Territory Tourist Commissions or equivalent organisations. See the Explanatory Notes for more information.

The former State and Territory Tourist Accommodation publications (Cat. nos 8635.1 to 8635.8) have been replaced by a Standard Data Service (SDS) for each State/Territory (except the ACT). The SDS products contain releasable data at Local Government Area level and Statistical Local Area level within Tourism Regions. SDS copies can be purchased by calling the ABS Inquiries number shown on the back of this publication. To subscribe to the SDS for any State/Territory, please telephone 1300 366 323.

INQUIRIES

If you have any queries about the content of this publication, please contact Paull Hoffmann on telephone: 07 3222 6201, fax: 07 3222 6284 or Internet: paull.hoffmann@abs.gov.au. For any queries about your subscriptions, please call the Subscription Services Freecall hotline on 1300 366 323.

W. McLennan
Australian Statistician

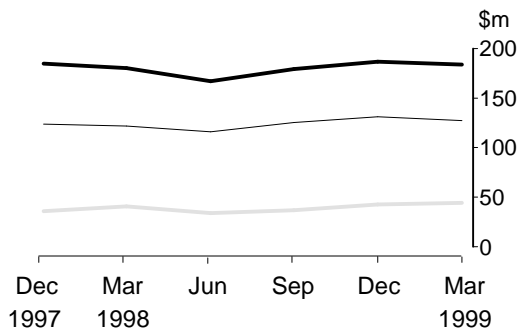
CONTENTS

	Page
Notes	2
Contents	3
Diagrams	4
TABLES	
Summary of accommodation establishments	
1 Australia	5
Accommodation establishments	
2 New South Wales	6
3 Victoria	8
4 Queensland	10
5 South Australia	12
6 Western Australia	14
7 Tasmania	16
8 Northern Territory	18
9 Australian Capital Territory	20
10 Australia	22
Hotels, motels, guest houses and serviced apartments, by Tourism Region	
11 New South Wales	24
12 Victoria	26
13 Queensland	28
14 South Australia	30
15 Western Australia	31
16 Tasmania	32
17 Northern Territory and Australian Capital Territory	33
INFORMATION	
Explanatory notes	34
Glossary	36

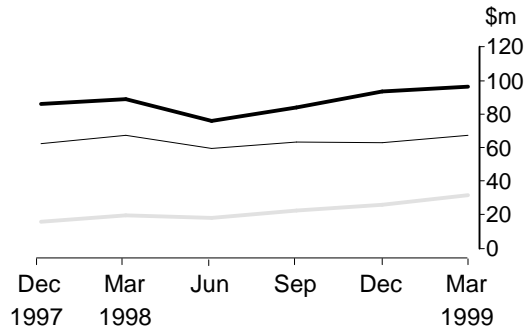
ACCOMMODATION TAKINGS - QUARTERLY

Licensed hotels
 Motels and guest houses
 Serviced apartments

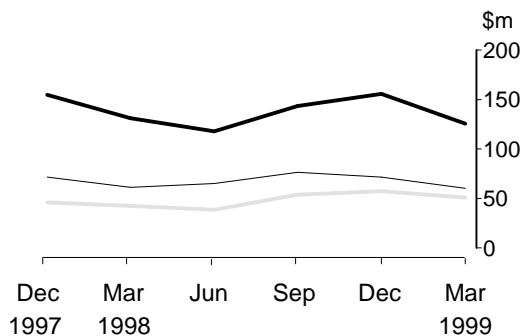
NEW SOUTH WALES



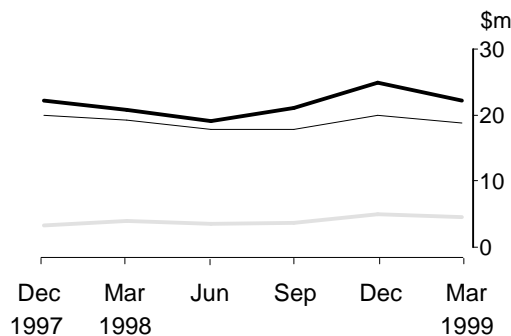
VICTORIA



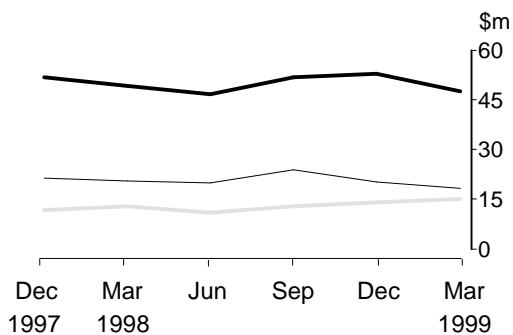
QUEENSLAND



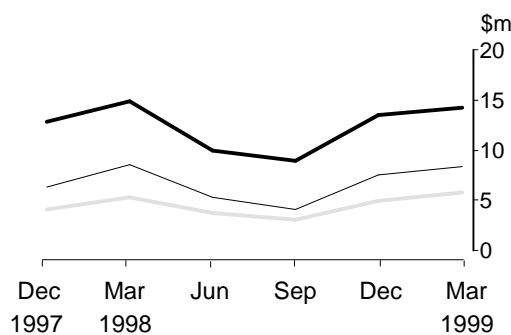
SOUTH AUSTRALIA



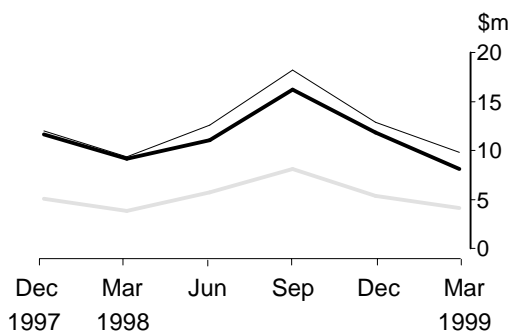
WESTERN AUSTRALIA



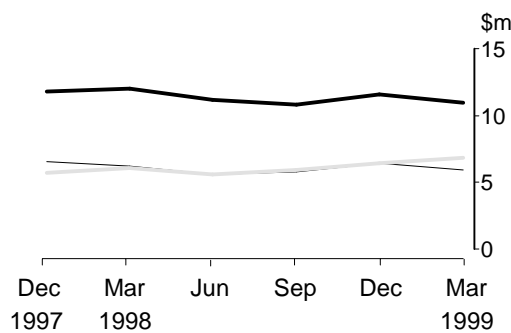
TASMANIA



NORTHERN TERRITORY



AUSTRALIAN CAPITAL TERRITORY



1

SUMMARY OF ACCOMMODATION ESTABLISHMENTS (a)—Australia

Period	Establish- ments no.	Guest rooms no.	Bed spaces no.	Persons employed no.	Room nights occupied '000	Room occupancy rate %	Guest nights '000	Bed occupancy rate %	Guest arrivals '000	Average length of stay days	Takings from accom- modation \$'000
LICENSED HOTELS WITH FACILITIES											
1997											
December quarter	738	68 027	182 349	73 629	4 004.8	64.6	6 573.9	39.6	2 852.8	2.3	535 114
1998											
March quarter	750	69 124	185 113	72 522	3 816.8	61.6	6 209.9	37.4	2 688.9	2.3	505 731
June quarter	750	70 019	186 675	70 800	3 645.1	57.5	5 894.6	34.9	2 613.9	2.3	458 529
September quarter	751	70 414	190 182	71 240	4 036.0	62.5	6 704.6	38.4	2 894.4	2.3	515 942
December quarter	747	70 802	191 147	71 468	4 194.4	64.5	6 884.1	39.2	2 946.2	2.3	550 378
1999											
March quarter	753	71 637	193 366	70 611	4 003.5	62.4	6 575.5	38.0	2 782.9	2.4	514 165
Year ended March 1998	15 267.2	62.4	24 894.2	38.1	10 685.4	2.3	2 002 506
Year ended March 1999	15 879.0	61.7	26 058.7	37.7	11 237.4	2.3	2 039 014
MOTELS AND GUEST HOUSES WITH FACILITIES											
1997											
December quarter	2 377	83 476	250 289	31 304	4 224.1	55.0	7 477.4	32.5	4 146.0	1.8	324 208
1998											
March quarter	2 377	83 427	249 154	31 150	4 033.8	53.9	7 193.5	32.2	3 895.3	1.8	314 800
June quarter	2 376	83 402	249 467	30 765	3 936.3	52.0	6 835.8	30.2	3 810.2	1.8	301 598
September quarter	2 387	84 322	250 991	31 463	4 208.0	54.4	7 444.4	32.3	4 203.4	1.8	334 949
December quarter	2 386	84 701	252 044	31 543	4 246.9	54.7	7 476.7	32.3	4 158.5	1.8	331 903
1999											
March quarter	2 386	84 614	251 693	30 938	4 083.2	53.7	7 276.1	32.2	3 939.4	1.8	322 196
Year ended March 1998	16 416.8	54.2	28 825.3	31.8	15 971.8	1.8	1 266 788
Year ended March 1999	16 474.4	53.7	29 033.0	31.8	16 111.5	1.8	1 290 646
SERVICED APARTMENTS											
1997											
December quarter	472	20 831	75 169	8 190	1 210.5	63.3	n.a.	n.a.	n.a.	n.a.	127 928
1998											
March quarter	482	21 643	77 423	8 386	1 205.5	62.4	2 648.0	38.3	715.0	3.7	134 968
June quarter	502	22 671	80 897	8 504	1 143.3	55.6	2 444.5	33.3	721.0	3.4	120 958
September quarter	522	24 332	85 570	9 224	1 395.4	63.2	3 032.6	38.9	771.2	3.9	147 171
December quarter	552	26 558	93 563	9 863	1 463.1	60.6	3 199.3	37.5	869.1	3.7	160 874
1999											
March quarter	564	27 610	96 217	10 074	1 499.1	60.6	3 260.9	37.8	875.3	3.7	166 699
Year ended March 1998	4 572.8	61.4	n.a.	n.a.	n.a.	n.a.	483 542
Year ended March 1999	5 500.8	60.1	11 937.4	37.0	3 236.6	3.7	595 701
TOTAL ESTABLISHMENTS											
1997											
December quarter	3 587	172 334	507 807	113 123	9 439.3	59.8	n.a.	n.a.	n.a.	n.a.	987 250
1998											
March quarter	3 609	174 194	511 690	112 058	9 056.0	58.0	16 051.3	35.0	7 299.2	2.2	955 499
June quarter	3 628	176 092	517 039	110 069	8 724.6	54.6	15 175.0	32.4	7 145.0	2.1	881 085
September quarter	3 660	179 068	526 743	111 927	9 639.4	58.7	17 181.6	35.6	7 869.0	2.2	998 062
December quarter	3 685	182 061	536 754	112 874	9 904.4	59.4	17 560.1	35.7	7 973.9	2.2	1 043 155
1999											
March quarter	3 703	183 861	541 276	111 623	9 585.8	58.1	17 112.5	35.2	7 597.6	2.3	1 003 060
Year ended March 1998	36 256.8	58.3	n.a.	n.a.	n.a.	n.a.	3 752 835
Year ended March 1999	37 854.2	57.7	67 029.1	34.8	30 585.5	2.2	3 925 361

(a) Comprising establishments with 15 or more rooms or units. See Explanatory Notes, paragraph 6.

STAR GRADING

<i>Period</i>	<i>Licensed hotels with facilities</i>	<i>Motels and guest houses</i>	<i>Serviced apartments</i>	<i>1</i>	<i>2</i>	<i>3</i>	<i>4</i>	<i>5</i>	<i>Ungraded</i>	<i>Total</i>
ESTABLISHMENTS, CAPACITY AND EMPLOYMENT (number)										
March quarter 1998										
Establishments	177	971	115	33	213	662	125	13	217	1 263
Guest rooms	19 605	31 470	5 049	1 092	6 157	23 342	12 301	3 589	9 643	56 124
Bed spaces	49 086	95 958	17 935	4 101	18 191	69 942	34 393	8 024	28 328	162 979
Persons employed	20 765	11 937	2 127	364	2 239	9 329	9 385	4 053	9 459	34 829
March quarter 1999										
Establishments	179	993	122	36	211	659	184	14	190	1 294
Guest rooms	20 636	33 255	5 551	1 221	6 052	22 276	16 892	3 541	9 460	59 442
Bed spaces	51 971	99 530	19 518	4 220	18 276	66 813	47 881	8 686	25 143	171 019
Persons employed	19 392	12 236	2 196	383	2 181	8 368	11 695	7 498	3 699	33 824
ROOM NIGHTS OCCUPIED ('000)										
1998										
<i>March quarter</i>	1 183.6	1 521.9	311.8	30.7	258.8	1 217.0	789.1	253.7	467.9	3 017.3
1999										
January	381.0	559.3	119.7	12.3	96.1	394.6	350.4	73.9	132.6	1 060.0
February	424.5	491.3	105.5	10.7	77.2	351.2	361.3	82.9	138.0	1 021.4
March	449.9	568.8	113.2	11.9	92.6	407.4	381.7	88.0	150.3	1 131.9
<i>March quarter</i>	1 255.4	1 619.3	338.5	34.9	265.9	1 153.3	1 093.5	244.8	421.0	3 213.2
ROOM OCCUPANCY RATES (%)										
1998										
<i>March quarter</i>	67.1	53.7	68.6	31.2	46.7	57.9	71.4	78.6	53.9	59.8
1999										
January	61.0	54.7	70.4	32.4	51.4	57.1	67.2	67.3	49.0	58.3
February	75.2	53.1	68.6	31.3	45.8	56.3	76.4	83.6	56.2	62.1
March	70.4	55.2	66.1	31.4	49.7	59.1	72.9	80.2	51.3	61.5
<i>March quarter</i>	68.7	54.4	68.3	31.7	49.1	57.6	72.0	76.8	52.0	60.6
GUEST NIGHTS ('000)										
1998										
<i>March quarter</i>	1 865.6	2 774.2	661.3	49.0	480.2	2 185.5	1 318.9	393.4	874.2	5 301.2
1999										
January	652.6	1 137.9	274.0	22.7	200.3	825.7	653.3	130.4	232.0	2 064.5
February	656.0	827.4	201.9	17.8	137.2	604.9	568.2	138.1	219.2	1 685.3
March	682.7	972.4	215.1	19.4	166.6	708.0	600.0	136.3	239.8	1 870.2
<i>March quarter</i>	1 991.3	2 937.6	691.0	59.9	504.1	2 138.7	1 821.5	404.8	691.0	5 620.0
BED OCCUPANCY RATES (%)										
1998										
<i>March quarter</i>	42.3	32.1	41.0	13.3	29.3	34.7	42.6	54.5	34.3	36.1
1999										
January	41.4	37.1	45.7	17.4	35.4	39.9	44.3	48.4	31.8	39.4
February	46.0	29.8	37.2	15.0	26.9	32.4	42.4	56.8	33.1	35.5
March	42.4	31.6	35.6	14.8	29.6	34.2	40.4	50.6	30.8	35.3
<i>March quarter</i>	43.2	32.9	39.6	15.8	30.8	35.6	42.4	51.8	31.8	36.8

(a) Comprising establishments with 15 or more rooms or units. See Explanatory Notes, paragraph 6.

2

ACCOMMODATION ESTABLISHMENTS (a)—NSW *continued*

STAR GRADING

Period	Licensed hotels with facilities	Motels and guest houses	Serviced apartments	1	2	3	4	5	Ungraded	Total
GUEST ARRIVALS ('000)										
1998										
March quarter	806.0	1 604.9	193.8	22.3	272.7	1 208.0	607.8	157.6	336.3	2 604.7
1999										
January	260.0	640.4	75.0	11.9	108.8	448.4	267.6	51.1	87.6	975.4
February	283.9	474.1	61.8	9.6	77.9	335.7	259.2	56.4	80.9	819.8
March	295.6	565.9	65.8	10.6	93.8	401.0	273.0	57.1	91.8	927.3
March quarter	839.6	1 680.4	202.5	32.1	280.4	1 185.1	799.9	164.6	260.3	2 722.5
AVERAGE LENGTH OF STAY (days)										
1998										
March quarter	2.3	1.7	3.4	2.2	1.8	1.8	2.2	2.5	2.6	2.0
1999										
March quarter	2.4	1.7	3.4	1.9	1.8	1.8	2.3	2.5	2.7	2.1
TAKINGS FROM ACCOMMODATION (\$'000) (b)										
1998										
March quarter	180 156	122 063	41 029	1 459	16 540	104 261	106 133	55 937	58 917	343 248
1999										
January	53 999	46 657	16 530	723	6 456	34 571	44 997	16 636	13 803	117 186
February	63 410	39 726	13 672	602	4 716	29 680	46 754	19 280	15 776	116 808
March	66 965	45 359	14 355	649	5 675	33 749	49 432	20 205	16 970	126 680
March quarter	184 374	131 742	44 557	1 974	16 847	98 001	141 183	56 121	46 549	360 674
AVERAGE TAKINGS PER ROOM NIGHT OCCUPIED (\$) (b)										
1998										
March quarter	152.2	80.2	131.6	47.5	63.9	85.7	134.5	220.5	125.9	113.8
1999										
January	141.7	83.4	138.1	58.9	67.2	87.6	128.4	225.0	104.1	110.6
February	149.4	80.9	129.5	56.3	61.1	84.5	129.4	232.5	114.3	114.4
March	148.8	79.8	126.8	54.5	61.3	82.8	129.5	229.6	112.9	111.9
March quarter	146.9	81.4	131.6	56.6	63.4	85.0	129.1	229.2	110.6	112.2
AVERAGE TAKINGS PER AVAILABLE ROOM NIGHT (\$) (b)										
1998										
March quarter	102.2	43.1	90.3	14.9	29.8	49.6	96.0	173.2	67.9	68.0
1999										
January	86.5	45.6	97.2	19.1	34.5	50.1	86.3	151.5	51.0	64.5
February	112.3	42.9	88.8	17.6	28.0	47.6	98.9	194.5	64.2	71.1
March	104.8	44.1	83.8	17.1	30.4	48.9	94.4	184.1	58.0	68.8
March quarter	100.8	44.2	89.9	18.0	31.1	48.9	93.0	176.1	57.5	68.0

(a) Comprising establishments with 15 or more rooms or units. See Explanatory Notes, paragraph 6.

(b) Including bed tax where applicable.

STAR GRADING

<i>Period</i>	<i>Licensed hotels with facilities</i>	<i>Motels and guest houses</i>	<i>Serviced apartments</i>	1	2	3	4	5	<i>Ungraded</i>	<i>Total</i>
ESTABLISHMENTS, CAPACITY AND EMPLOYMENT (number)										
March quarter 1998										
Establishments	116	505	47	4	88	387	102	11	76	668
Guest rooms	9 794	16 519	2 290	90	2 654	11 837	8 247	2 979	2 796	28 603
Bed spaces	23 212	47 477	7 147	249	7 382	34 500	20 907	6 595	8 203	77 836
Persons employed	14 275	6 027	1 020	44	825	4 360	5 528	9 428	1 137	21 322
March quarter 1999										
Establishments	117	501	68	11	93	388	148	10	36	686
Guest rooms	10 340	16 117	3 703	242	2 548	12 299	10 810	2 930	1 331	30 160
Bed spaces	25 284	47 112	11 024	654	7 982	35 140	28 947	6 597	4 100	83 420
Persons employed	13 826	5 814	1 489	156	927	4 457	6 335	8 618	636	21 129
ROOM NIGHTS OCCUPIED ('000)										
1998										
<i>March quarter</i>	584.1	804.4	145.6	2.3	113.9	591.3	497.3	205.1	124.3	1 534.1
1999										
January	199.0	261.7	76.6	2.6	33.0	210.8	208.2	63.6	19.1	537.3
February	212.4	244.4	71.8	2.3	28.5	189.1	222.0	69.5	17.2	528.6
March	242.2	287.7	85.0	3.0	33.6	224.7	255.3	76.4	21.8	614.9
<i>March quarter</i>	653.6	793.8	233.3	7.9	95.1	624.6	685.6	209.6	58.1	1 680.8
ROOM OCCUPANCY RATES (%)										
1998										
<i>March quarter</i>	68.1	54.1	70.6	27.8	47.7	55.5	69.0	76.7	49.5	60.1
1999										
January	62.1	52.4	67.8	34.5	41.7	55.3	62.1	70.0	48.5	57.6
February	73.4	54.2	70.6	34.3	40.2	54.9	73.3	84.8	48.2	62.7
March	75.6	57.6	74.5	39.5	43.0	58.9	76.2	84.2	52.8	65.8
<i>March quarter</i>	70.2	54.7	71.0	36.2	41.7	56.4	70.5	79.5	49.9	62.0
GUEST NIGHTS ('000)										
1998										
<i>March quarter</i>	894.2	1 425.5	288.5	3.7	223.3	1 060.4	807.2	292.6	221.2	2 608.3
1999										
January	330.8	511.6	167.9	4.7	69.1	420.2	387.8	91.4	37.1	1 010.2
February	307.8	404.9	124.4	3.8	51.9	321.3	339.2	93.0	27.9	837.2
March	355.1	484.8	149.8	4.8	64.5	386.8	391.4	103.3	38.8	989.7
<i>March quarter</i>	993.7	1 401.3	442.0	13.3	185.5	1 128.3	1 118.4	287.7	103.9	2 837.0
BED OCCUPANCY RATES (%)										
1998										
<i>March quarter</i>	43.8	33.4	44.9	16.4	33.6	34.2	43.9	49.4	30.0	37.5
1999										
January	42.2	35.0	49.7	23.0	27.9	38.6	43.2	44.7	30.1	39.1
February	43.5	30.7	40.9	20.8	23.3	32.7	41.9	50.3	25.1	35.9
March	45.3	33.2	44.1	23.9	26.3	35.5	43.6	50.5	30.5	38.3
<i>March quarter</i>	43.7	33.0	45.0	22.6	25.9	35.7	42.9	48.5	28.7	37.8

(a) Comprising establishments with 15 or more rooms or units. See Explanatory Notes, paragraph 6.

3

ACCOMMODATION ESTABLISHMENTS (a)—Vic. *continued*

STAR GRADING

Period	Licensed hotels with facilities	Motels and guest houses	Serviced apartments	1	2	3	4	5	Ungraded	Total
GUEST ARRIVALS ('000)										
1998										
March quarter	418.4	797.7	73.2	2.1	120.3	571.5	397.7	115.7	82.1	1 289.3
1999										
January	143.2	274.1	42.2	2.6	39.9	209.8	164.8	32.0	10.4	459.5
February	149.2	228.4	41.3	2.1	33.2	170.9	164.2	38.5	10.0	418.8
March	159.4	272.9	47.9	2.7	39.4	208.6	177.3	40.0	12.3	480.2
March quarter	451.8	775.4	131.4	7.4	112.5	589.3	506.2	110.5	32.7	1 358.6
AVERAGE LENGTH OF STAY (days)										
1998										
March quarter	2.1	1.8	3.9	1.8	1.9	1.9	2.0	2.5	2.7	2.0
1999										
March quarter	2.2	1.8	3.4	1.8	1.6	1.9	2.2	2.6	3.2	2.1
TAKINGS FROM ACCOMMODATION (\$'000)										
1998										
March quarter	88 634	67 148	19 814	75	7 547	47 225	65 606	43 079	12 063	175 596
1999										
January	27 006	22 550	10 276	136	2 074	17 467	25 138	12 799	2 218	59 832
February	30 814	20 574	9 445	119	1 699	14 894	27 572	14 628	1 921	60 833
March	38 501	24 363	12 045	146	2 018	18 082	34 573	17 478	2 612	74 909
March quarter	96 321	67 486	31 766	401	5 792	50 442	87 283	44 905	6 751	195 573
AVERAGE TAKINGS PER ROOM NIGHT OCCUPIED (\$)										
1998										
March quarter	151.7	83.5	136.1	33.3	66.3	79.9	131.9	210.1	97.0	114.5
1999										
January	135.7	86.2	134.1	52.6	62.9	82.9	120.7	201.3	116.0	111.4
February	145.0	84.2	131.6	51.4	59.6	78.8	124.2	210.4	111.7	115.1
March	158.9	84.7	141.8	49.1	60.0	80.5	135.4	228.7	120.0	121.8
March quarter	147.4	85.0	136.1	50.9	60.9	80.8	127.3	214.3	116.2	116.4
AVERAGE TAKINGS PER AVAILABLE ROOM NIGHT (\$)										
1998										
March quarter	103.3	45.2	96.1	9.3	31.6	44.3	91.1	161.1	48.1	68.8
1999										
January	84.3	45.1	90.9	18.2	26.3	45.8	75.0	140.9	56.2	64.1
February	106.4	45.6	92.9	17.6	23.9	43.2	91.1	178.3	53.9	72.2
March	120.1	48.8	105.7	19.4	25.8	47.4	103.2	192.4	63.3	80.2
March quarter	103.5	46.5	96.6	18.4	25.4	45.6	89.7	170.3	58.0	72.2

(a) Comprising establishments with 15 or more rooms or units. See Explanatory Notes, paragraph 6.

4

ACCOMMODATION ESTABLISHMENTS (a)—Qld

STAR GRADING

<i>Period</i>	<i>Licensed hotels with facilities</i>	<i>Motels and guest houses</i>	<i>Serviced apartments</i>	<i>1</i>	<i>2</i>	<i>3</i>	<i>4</i>	<i>5</i>	<i>Ungraded</i>	<i>Total</i>
ESTABLISHMENTS, CAPACITY AND EMPLOYMENT (number)										
March quarter 1998										
Establishments	174	515	198	15	156	368	116	18	214	887
Guest rooms	20 493	18 227	8 594	384	4 280	14 861	13 713	4 427	9 649	47 314
Bed spaces	63 209	54 948	31 996	1 008	13 102	45 838	44 252	13 743	32 210	150 153
Persons employed	20 483	6 702	3 025	154	1 517	6 527	11 400	7 356	3 256	30 210
March quarter 1999										
Establishments	173	511	236	14	131	439	232	24	80	920
Guest rooms	20 812	18 234	11 429	385	3 623	16 362	19 583	5 741	4 781	50 475
Bed spaces	64 560	54 729	41 631	985	11 229	52 370	63 682	18 083	14 571	160 920
Persons employed	20 423	6 423	3 781	121	1 651	5 977	12 447	8 338	2 093	30 627
ROOM NIGHTS OCCUPIED ('000)										
1998										
<i>March quarter</i>	1 021.0	856.4	424.8	12.5	165.5	704.4	709.8	262.1	448.0	2 302.2
1999										
January	385.8	292.0	224.2	5.4	51.8	279.8	372.6	121.5	71.0	902.0
February	332.1	270.9	149.9	4.5	41.7	234.3	310.5	106.0	56.0	752.9
March	359.0	306.3	169.1	5.0	47.8	266.2	336.4	111.6	67.6	834.4
<i>March quarter</i>	1 076.9	869.2	543.2	14.8	141.3	780.2	1 019.5	339.1	194.5	2 489.4
ROOM OCCUPANCY RATES (%)										
1998										
<i>March quarter</i>	55.4	52.5	55.5	36.6	43.1	52.7	57.5	65.8	52.4	54.3
1999										
January	59.8	51.7	63.7	44.8	46.4	55.2	61.4	68.3	48.7	57.8
February	57.2	53.1	47.0	41.5	41.3	51.3	56.6	65.9	42.2	53.4
March	55.8	54.2	47.7	41.6	42.6	52.7	55.4	62.7	45.6	53.4
<i>March quarter</i>	57.6	53.0	53.0	42.7	43.5	53.1	57.8	65.6	45.6	54.9
GUEST NIGHTS ('000)										
1998										
<i>March quarter</i>	1 877.4	1 502.0	1 030.1	21.1	288.9	1 308.9	1 331.6	459.7	999.4	4 409.5
1999										
January	799.3	570.5	587.2	8.3	105.0	599.5	832.7	254.0	157.3	1 957.0
February	594.9	450.1	336.4	6.3	71.2	424.0	583.6	193.3	103.0	1 381.4
March	644.3	511.4	386.0	7.1	85.1	488.8	635.7	199.6	125.5	1 541.7
<i>March quarter</i>	2 038.5	1 532.0	1 309.6	21.7	261.3	1 512.4	2 052.0	647.0	385.8	4 880.1
BED OCCUPANCY RATES (%)										
1998										
<i>March quarter</i>	33.0	30.5	36.2	23.6	24.6	31.8	33.4	37.2	35.1	32.8
1999										
January	39.9	33.7	45.8	27.3	30.3	36.9	42.2	45.3	35.5	39.3
February	33.0	29.4	29.0	22.8	22.7	29.0	32.7	38.2	25.5	30.7
March	32.3	30.1	29.9	23.1	24.4	30.2	32.2	35.6	27.8	30.9
<i>March quarter</i>	35.2	31.1	35.1	24.4	25.9	32.2	35.8	39.8	29.7	33.9

(a) Comprising establishments with 15 or more rooms or units. See Explanatory Notes, paragraph 6.

4

ACCOMMODATION ESTABLISHMENTS (a)—Qld *continued*

STAR GRADING

Period	Licensed hotels with facilities	Motels and guest houses	Serviced apartments	1	2	3	4	5	Ungraded	Total
GUEST ARRIVALS ('000)										
1998										
March quarter	729.2	733.3	230.6	9.7	152.7	575.7	546.5	138.5	269.9	1 693.0
1999										
January	258.6	270.7	110.7	3.6	54.9	232.5	236.5	70.0	42.5	640.0
February	235.2	218.0	77.9	2.6	38.2	182.2	207.5	65.7	34.8	531.0
March	249.2	246.4	90.1	3.2	45.4	210.3	218.4	67.9	40.4	585.7
March quarter	743.0	735.1	278.7	9.4	138.6	625.1	662.4	203.6	117.8	1 756.7
AVERAGE LENGTH OF STAY (days)										
1998										
March quarter	2.6	2.0	4.5	2.2	1.9	2.3	2.4	3.3	3.7	2.6
1999										
March quarter	2.7	2.1	4.7	2.3	1.9	2.4	3.1	3.2	3.3	2.8
TAKINGS FROM ACCOMMODATION (\$'000)										
1998										
March quarter	130 814	61 667	42 080	457	9 572	54 302	78 973	51 231	40 026	234 561
1999										
January	49 079	20 890	23 586	210	3 878	21 508	39 009	22 252	6 698	93 555
February	38 755	18 780	13 946	174	2 667	16 390	29 593	17 885	4 773	71 481
March	42 331	21 573	15 459	192	3 080	18 718	33 055	18 237	6 082	79 363
March quarter	130 165	61 243	52 992	575	9 624	56 615	101 657	58 374	17 553	244 399
AVERAGE TAKINGS PER ROOM NIGHT OCCUPIED (\$)										
1998										
March quarter	128.1	72.0	99.1	36.7	57.9	77.1	111.3	195.5	89.3	101.9
1999										
January	127.2	71.5	105.2	39.2	74.8	76.9	104.7	183.1	94.4	103.7
February	116.7	69.3	93.0	38.9	64.0	70.0	95.3	168.7	85.3	94.9
March	117.9	70.4	91.4	38.6	64.4	70.3	98.3	163.5	90.0	95.1
March quarter	120.9	70.5	97.5	38.9	68.1	72.6	99.7	172.2	90.2	98.2
AVERAGE TAKINGS PER AVAILABLE ROOM NIGHT (\$)										
1998										
March quarter	71.0	37.8	54.9	13.4	25.0	40.7	64.0	128.6	46.8	55.3
1999										
January	76.1	37.0	67.0	17.6	34.7	42.4	64.3	125.0	45.9	59.9
February	66.7	36.8	43.7	16.1	26.4	35.9	54.0	111.3	36.0	50.7
March	65.8	38.2	43.6	16.1	27.4	37.0	54.5	102.5	41.0	50.8
March quarter	69.6	37.3	51.7	16.6	29.6	38.5	57.7	113.0	41.1	53.9

(a) Comprising establishments with 15 or more rooms or units. See Explanatory Notes, paragraph 6.

STAR GRADING

Period	Licensed hotels with facilities	Motels and guest houses	Serviced apartments	1	2	3	4	5	Ungraded	Total
ESTABLISHMENTS, CAPACITY AND EMPLOYMENT (number)										
March quarter 1998										
Establishments	59	149	19	2	64	120	24	3	14	227
Guest rooms	3 808	5 181	726	n.p.	1 888	4 463	n.p.	n.p.	n.p.	9 715
Bed spaces	9 748	15 883	2 422	n.p.	5 312	13 147	n.p.	n.p.	n.p.	28 053
Persons employed	4 025	2 039	321	n.p.	973	2 468	n.p.	n.p.	n.p.	6 385
March quarter 1999										
Establishments	61	145	22	5	49	125	37	4	8	228
Guest rooms	4 053	5 119	888	129	1 392	4 734	2 318	1 263	224	10 060
Bed spaces	10 042	15 685	2 975	348	3 842	13 936	7 373	2 560	643	28 702
Persons employed	4 179	2 076	356	105	769	2 562	1 699	1 321	155	6 611
ROOM NIGHTS OCCUPIED ('000)										
1998										
March quarter	206.0	267.3	44.2	n.p.	71.0	234.0	n.p.	n.p.	n.p.	517.4
1999										
January	69.8	88.2	19.2	1.2	17.2	81.7	47.0	27.4	2.8	177.3
February	70.5	77.2	16.0	1.1	15.2	72.3	45.1	27.6	2.3	163.6
March	76.9	89.6	17.3	1.3	18.0	84.3	47.4	30.4	2.4	183.8
March quarter	217.2	254.9	52.6	3.6	50.4	238.3	139.6	85.4	7.5	524.8
ROOM OCCUPANCY RATES (%)										
1998										
March quarter	60.1	57.4	67.6	n.p.	42.0	58.2	n.p.	n.p.	n.p.	59.2
1999										
January	55.6	55.6	69.9	30.0	39.8	55.6	65.4	70.1	40.0	56.8
February	62.1	53.8	64.4	29.7	39.1	54.5	69.6	78.0	37.3	58.1
March	61.2	56.4	63.0	32.8	41.8	57.5	66.0	77.6	33.9	59.0
March quarter	59.6	55.3	65.8	30.8	40.3	55.9	66.9	75.1	37.0	58.0
GUEST NIGHTS ('000)										
1998										
March quarter	306.6	457.5	92.3	n.p.	123.6	401.2	n.p.	n.p.	n.p.	856.3
1999										
January	119.9	175.1	44.2	2.2	32.4	167.4	92.3	39.8	5.2	339.2
February	100.9	125.7	32.5	1.5	24.4	123.7	70.3	35.7	3.4	259.2
March	109.3	145.3	34.8	2.0	28.4	142.5	74.2	38.9	3.6	289.5
March quarter	330.2	446.2	111.5	5.6	85.3	433.5	236.9	114.4	12.2	887.9
BED OCCUPANCY RATES (%)										
1998										
March quarter	34.9	32.1	42.3	n.p.	26.0	33.9	n.p.	n.p.	n.p.	33.9
1999										
January	38.5	36.0	47.9	20.0	27.2	38.7	40.4	50.1	26.2	38.1
February	35.9	28.6	39.0	15.6	22.7	31.7	34.1	49.8	19.2	32.2
March	35.1	29.9	37.8	18.2	23.9	33.0	32.5	49.0	17.9	32.5
March quarter	36.5	31.6	41.7	18.0	24.7	34.6	35.7	49.6	21.1	34.4

(a) Comprising establishments with 15 or more rooms or units. See Explanatory Notes, paragraph 6.

STAR GRADING

<i>Period</i>	<i>Licensed hotels with facilities</i>	<i>Motels and guest houses</i>	<i>Serviced apartments</i>	1	2	3	4	5	<i>Ungraded</i>	<i>Total</i>
GUEST ARRIVALS ('000)										
1998										
<i>March quarter</i>	146.9	247.0	27.1	<i>n.p.</i>	68.6	213.9	<i>n.p.</i>	<i>n.p.</i>	<i>n.p.</i>	421.1
1999										
January	55.4	96.3	13.3	1.1	18.4	90.5	37.4	14.5	3.1	165.0
February	48.6	73.2	10.5	0.9	13.7	66.8	33.3	15.9	1.6	132.3
March	51.5	83.8	12.0	1.0	16.0	76.8	35.1	16.4	1.9	147.2
<i>March quarter</i>	155.5	253.2	35.8	3.0	48.1	234.1	105.8	46.9	6.6	444.5
AVERAGE LENGTH OF STAY (days)										
1998										
<i>March quarter</i>	2.1	1.9	3.4	<i>n.p.</i>	1.8	1.9	<i>n.p.</i>	<i>n.p.</i>	<i>n.p.</i>	2.0
1999										
<i>March quarter</i>	2.1	1.8	3.1	1.9	1.8	1.9	2.2	2.4	1.9	2.0
TAKINGS FROM ACCOMMODATION (\$'000)										
1998										
<i>March quarter</i>	20 851	19 247	3 913	<i>n.p.</i>	3 327	16 633	<i>n.p.</i>	<i>n.p.</i>	<i>n.p.</i>	44 011
1999										
January	6 983	6 538	1 685	51	899	5 865	4 944	3 298	148	15 206
February	7 239	5 644	1 349	45	735	5 053	4 733	3 563	103	14 232
March	7 959	6 611	1 483	54	898	5 893	4 988	4 107	112	16 052
<i>March quarter</i>	22 181	18 793	4 516	151	2 532	16 812	14 665	10 969	362	45 490
AVERAGE TAKINGS PER ROOM NIGHT OCCUPIED (\$)										
1998										
<i>March quarter</i>	101.2	72.0	88.5	<i>n.p.</i>	46.9	71.1	<i>n.p.</i>	<i>n.p.</i>	<i>n.p.</i>	85.1
1999										
January	100.0	74.1	87.6	42.8	52.3	71.8	105.2	120.2	53.3	85.8
February	102.7	73.1	84.3	42.1	48.3	69.9	104.8	129.2	43.9	87.0
March	103.5	73.8	85.5	41.3	49.8	69.9	105.2	135.2	47.5	87.3
<i>March quarter</i>	102.1	73.7	85.9	42.1	50.2	70.6	105.1	128.4	48.5	86.7
AVERAGE TAKINGS PER AVAILABLE ROOM NIGHT (\$)										
1998										
<i>March quarter</i>	60.8	41.3	59.9	<i>n.p.</i>	19.7	41.4	<i>n.p.</i>	<i>n.p.</i>	<i>n.p.</i>	50.4
1999										
January	55.6	41.2	61.2	12.8	20.8	40.0	68.8	84.2	21.3	48.8
February	63.8	39.4	54.3	12.5	18.9	38.1	72.9	100.7	16.4	50.5
March	63.3	41.7	53.9	13.6	20.8	40.2	69.4	104.9	16.1	51.5
<i>March quarter</i>	60.8	40.8	56.5	13.0	20.2	39.5	70.3	96.5	18.0	50.2

(a) Comprising establishments with 15 or more rooms or units. See Explanatory Notes, paragraph 6.

STAR GRADING

<i>Period</i>	<i>Licensed hotels with facilities</i>	<i>Motels and guest houses</i>	<i>Serviced apartments</i>	<i>1</i>	<i>2</i>	<i>3</i>	<i>4</i>	<i>5</i>	<i>Ungraded</i>	<i>Total</i>
ESTABLISHMENTS, CAPACITY AND EMPLOYMENT (number)										
March quarter 1998										
Establishments	132	112	50	5	63	129	15	8	74	294
Guest rooms	8 851	5 518	2 227	122	1 893	7 207	2 061	1 937	3 376	16 596
Bed spaces	22 040	14 965	7 859	260	4 509	19 394	5 499	5 176	10 026	44 864
Persons employed	6 733	2 109	843	35	1 093	3 236	1 534	2 135	1 652	9 685
March quarter 1999										
Establishments	131	113	60	4	35	127	45	10	83	304
Guest rooms	9 147	5 413	2 957	91	1 039	7 298	3 844	2 173	3 072	17 517
Bed spaces	23 368	14 758	10 471	223	2 639	20 148	11 469	6 522	7 596	48 597
Persons employed	6 891	2 046	1 025	49	587	2 997	2 345	2 376	1 608	9 962
ROOM NIGHTS OCCUPIED ('000)										
1998										
<i>March quarter</i>	471.5	272.6	128.2	2.7	74.8	362.6	124.5	136.3	171.5	872.3
1999										
January	146.7	85.2	60.2	0.6	14.8	112.9	70.3	47.0	46.5	292.1
February	151.8	78.9	50.1	0.5	13.3	108.9	69.2	45.2	43.6	280.8
March	165.7	86.1	54.3	0.6	13.9	116.8	77.1	49.9	47.8	306.1
<i>March quarter</i>	464.2	250.2	164.5	1.7	42.0	338.6	216.6	142.1	137.9	878.9
ROOM OCCUPANCY RATES (%)										
1998										
<i>March quarter</i>	59.2	55.1	64.0	24.8	44.0	56.0	67.1	78.2	56.4	58.5
1999										
January	51.8	50.8	65.6	22.7	45.8	49.9	59.0	69.7	48.8	53.8
February	59.3	52.1	60.5	20.0	45.9	53.3	64.3	74.3	50.7	57.2
March	58.4	51.3	59.2	21.1	43.2	51.6	64.7	74.1	50.2	56.4
<i>March quarter</i>	56.4	51.4	61.8	21.3	44.9	51.5	62.6	72.7	49.9	55.8
GUEST NIGHTS ('000)										
1998										
<i>March quarter</i>	701.4	480.6	276.8	3.5	114.6	620.5	196.6	221.0	302.6	1 458.8
1999										
January	239.1	164.4	158.1	1.1	29.0	230.5	135.0	86.8	79.4	561.6
February	216.5	131.0	108.9	0.7	22.1	186.5	108.7	74.5	63.9	456.4
March	233.2	141.1	116.4	0.8	22.4	197.5	120.7	81.8	67.5	490.7
<i>March quarter</i>	688.8	436.5	383.4	2.6	73.4	614.5	364.4	243.0	210.7	1 508.7
BED OCCUPANCY RATES (%)										
1998										
<i>March quarter</i>	35.4	35.8	39.1	15.0	28.3	35.6	39.7	47.4	33.5	36.2
1999										
January	33.0	35.9	48.7	15.6	35.4	36.9	38.0	42.9	33.7	37.3
February	33.1	31.7	37.1	11.7	29.9	33.1	33.9	40.8	30.0	33.5
March	32.2	30.8	35.9	11.9	27.3	31.6	34.0	40.5	28.7	32.6
<i>March quarter</i>	32.8	32.9	40.7	13.1	30.9	33.9	35.3	41.4	30.8	34.5

(a) Comprising establishments with 15 or more rooms or units. See Explanatory Notes, paragraph 6.

6

ACCOMMODATION ESTABLISHMENTS (a)—WA *continued*

STAR GRADING

Period	Licensed hotels with facilities	Motels and guest houses	Serviced apartments	1	2	3	4	5	Ungraded	Total
GUEST ARRIVALS ('000)										
1998										
March quarter	285.9	205.2	72.8	1.1	55.9	257.2	67.5	72.8	109.5	563.9
1999										
January	99.8	74.1	37.8	0.8	13.3	93.0	43.9	24.5	36.1	211.6
February	94.6	62.3	29.8	0.5	10.0	79.1	42.0	25.0	30.1	186.7
March	101.0	65.6	31.1	0.5	10.6	82.1	46.3	26.1	32.1	197.8
March quarter	295.4	202.0	98.7	1.8	33.9	254.1	132.3	75.7	98.3	596.1
AVERAGE LENGTH OF STAY (days)										
1998										
March quarter	2.5	2.3	3.8	3.2	2.1	2.4	2.9	3.0	2.8	2.6
1999										
March quarter	2.3	2.2	3.9	1.5	2.2	2.4	2.8	3.2	2.1	2.5
TAKINGS FROM ACCOMMODATION (\$'000)										
1998										
March quarter	49 275	20 599	12 954	125	4 200	28 346	13 874	19 644	16 639	82 827
1999										
January	14 904	6 655	6 354	35	1 010	9 102	7 767	6 539	3 459	27 913
February	15 730	5 846	4 770	24	842	8 205	7 594	6 250	3 431	26 346
March	17 217	6 241	5 069	23	859	8 732	8 410	6 841	3 660	28 527
March quarter	47 850	18 742	16 193	82	2 711	26 040	23 771	19 631	10 551	82 786
AVERAGE TAKINGS PER ROOM NIGHT OCCUPIED (\$)										
1998										
March quarter	104.5	75.6	101.0	45.8	56.2	78.2	111.5	144.1	97.0	94.9
1999										
January	101.6	78.1	105.6	54.9	68.5	80.6	110.4	139.2	74.4	95.6
February	103.6	74.1	95.2	46.8	63.1	75.3	109.8	138.2	78.7	93.8
March	103.9	72.5	93.4	39.4	61.7	74.8	109.1	137.0	76.6	93.2
March quarter	103.1	74.9	98.4	47.2	64.5	76.9	109.7	138.1	76.5	94.2
AVERAGE TAKINGS PER AVAILABLE ROOM NIGHT (\$)										
1998										
March quarter	61.9	41.6	64.6	11.4	24.7	43.8	74.8	112.7	54.8	55.5
1999										
January	52.6	39.7	69.3	12.5	31.4	40.2	65.2	97.1	36.3	51.4
February	61.4	38.6	57.6	9.3	28.9	40.2	70.6	102.7	39.9	53.7
March	60.7	37.2	55.3	8.3	26.7	38.6	70.6	101.6	38.4	52.5
March quarter	58.1	38.5	60.8	10.1	29.0	39.6	68.7	100.4	38.2	52.5

(a) Comprising establishments with 15 or more rooms or units. See Explanatory Notes, paragraph 6.

STAR GRADING

Period	Licensed hotels with facilities	Motels and guest houses	Serviced apartments	1 and ungraded	2	3	4 and 5	Total
ESTABLISHMENTS, CAPACITY AND EMPLOYMENT (number)								
March quarter 1998								
Establishments	55	52	23	25	16	61	28	130
Guest rooms	2 930	1 743	848	n.p.	n.p.	2 396	2 016	5 521
Bed spaces	8 000	5 372	3 231	n.p.	n.p.	7 317	5 950	16 603
Persons employed	2 870	753	395	n.p.	n.p.	1 239	2 264	4 018
March quarter 1999								
Establishments	54	51	24	8	17	71	33	129
Guest rooms	2 898	1 749	865	246	478	2 609	2 179	5 512
Bed spaces	7 935	5 431	3 321	556	1 217	8 203	6 711	16 687
Persons employed	2 848	714	428	92	256	1 315	2 327	3 990
ROOM NIGHTS OCCUPIED ('000)								
1998								
March quarter	173.4	108.9	52.0	n.p.	n.p.	142.3	137.6	334.3
1999								
January	52.9	33.1	18.7	2.1	6.6	50.3	45.8	104.8
February	56.8	33.0	17.6	2.6	6.8	49.9	48.1	107.3
March	59.1	38.0	18.6	2.6	7.6	55.0	50.5	115.7
March quarter	168.8	104.1	54.9	7.3	20.9	155.2	144.4	327.8
ROOM OCCUPANCY RATES (%)								
1998								
March quarter	65.8	69.4	68.1	n.p.	n.p.	66.0	75.9	67.3
1999								
January	58.9	61.1	69.7	27.6	44.4	62.2	67.8	61.3
February	70.0	67.3	72.6	37.3	50.6	68.3	78.9	69.5
March	65.8	70.0	69.4	34.4	51.0	68.1	74.7	67.7
March quarter	64.7	66.1	70.5	33.0	48.6	66.1	73.6	66.1
GUEST NIGHTS ('000)								
1998								
March quarter	294.0	210.5	117.0	n.p.	n.p.	276.2	240.0	621.4
1999								
January	94.7	70.7	48.6	4.2	11.0	111.7	87.1	214.0
February	88.4	61.4	37.5	4.4	10.3	94.2	78.4	187.3
March	91.6	72.8	38.1	4.3	12.0	104.5	81.7	202.5
March quarter	274.7	204.9	124.2	12.9	33.4	310.3	247.3	603.9
BED OCCUPANCY RATES (%)								
1998								
March quarter	40.8	43.5	40.2	n.p.	n.p.	41.9	44.8	41.6
1999								
January	38.5	42.0	47.2	24.5	29.2	43.9	41.9	41.4
February	39.8	40.4	40.4	28.4	30.4	41.0	41.7	40.1
March	37.2	43.2	37.0	24.8	31.9	41.1	39.3	39.2
March quarter	38.5	41.9	41.6	25.8	30.5	42.0	40.9	40.2

(a) Comprising establishments with 15 or more rooms or units. See Explanatory Notes, paragraph 6.

7

ACCOMMODATION ESTABLISHMENTS (a)—Tas. *continued*

STAR GRADING

Period	Licensed hotels with facilities	Motels and guest houses	Serviced apartments	1 and ungraded	2	3	4 and 5	Total
GUEST ARRIVALS ('000)								
1998								
March quarter	161.6	122.4	59.1	<i>n.p.</i>	<i>n.p.</i>	168.4	111.4	343.1
1999								
January	52.5	39.9	22.9	1.5	6.7	66.0	40.9	115.2
February	51.8	34.8	19.2	1.7	6.4	56.7	40.9	105.7
March	54.8	43.4	19.4	2.0	7.8	63.8	44.1	117.6
March quarter	159.0	118.1	61.5	5.3	20.9	186.4	126.0	338.6
AVERAGE LENGTH OF STAY (days)								
1998								
March quarter	1.8	1.7	2.0	<i>n.p.</i>	<i>n.p.</i>	1.6	2.2	1.8
1999								
March quarter	1.7	1.7	2.0	2.5	1.6	1.7	2.0	1.8
TAKINGS FROM ACCOMMODATION (\$'000)								
1998								
March quarter	14 849	8 515	5 335	<i>n.p.</i>	<i>n.p.</i>	10 378	14 408	28 699
1999								
January	4 476	2 784	2 025	124	297	3 894	4 970	9 285
February	4 801	2 664	1 804	139	309	3 723	5 099	9 269
March	4 938	2 959	1 900	158	337	3 995	5 307	9 797
March quarter	14 215	8 408	5 728	422	943	11 611	15 375	28 351
AVERAGE TAKINGS PER ROOM NIGHT OCCUPIED (\$)								
1998								
March quarter	85.6	78.2	102.7	<i>n.p.</i>	<i>n.p.</i>	72.9	104.7	85.9
1999								
January	84.6	84.0	108.3	59.1	45.2	77.4	108.6	88.6
February	84.5	80.8	102.6	54.0	45.6	74.7	105.9	86.4
March	83.5	78.0	102.1	60.4	44.6	72.6	105.2	84.7
March quarter	84.2	80.8	104.4	57.8	45.1	74.8	106.5	86.5
AVERAGE TAKINGS PER AVAILABLE ROOM NIGHT (\$)								
1998								
March quarter	56.3	54.3	69.9	<i>n.p.</i>	<i>n.p.</i>	48.1	79.4	57.8
1999								
January	49.8	51.4	75.5	16.3	20.1	48.1	73.6	54.3
February	59.2	54.4	74.5	20.2	23.1	51.0	83.6	60.1
March	55.0	54.6	70.9	20.8	22.8	49.4	78.6	57.3
March quarter	54.5	53.4	73.6	19.0	21.9	49.4	78.4	57.2

(a) Comprising establishments with 15 or more rooms or units. See Explanatory Notes, paragraph 6.

STAR GRADING

Period	Licensed	Motels	Serviced	STAR GRADING					Total
	hotels with facilities	and guest houses		apartments	1	2	3	4 and 5	
ESTABLISHMENTS, CAPACITY AND EMPLOYMENT (number)									
March quarter 1998									
Establishments	24	50	17	3	25	30	9	24	91
Guest rooms	1 974	3 109	1 077	n.p.	1 167	2 435	1 145	n.p.	6 160
Bed spaces	5 587	9 358	3 438	n.p.	3 424	7 675	3 155	n.p.	18 383
Persons employed	1 665	1 016	337	n.p.	318	1 085	1 160	n.p.	3 018
March quarter 1999									
Establishments	24	48	16	4	23	33	14	14	88
Guest rooms	1 984	3 025	1 038	134	977	2 598	1 917	421	6 047
Bed spaces	5 636	9 048	3 219	327	2 921	7 801	5 583	1 271	17 903
Persons employed	1 691	1 075	365	52	288	1 188	1 424	179	3 131
ROOM NIGHTS OCCUPIED ('000)									
1998									
March quarter	75.4	116.9	43.3	n.p.	31.3	105.5	50.0	n.p.	235.6
1999									
January	21.2	34.3	14.3	1.1	7.4	34.2	22.3	4.7	69.7
February	24.2	35.2	13.6	1.2	7.0	34.4	25.5	5.1	73.1
March	26.5	43.5	16.9	1.4	9.4	41.1	29.6	5.5	87.0
March quarter	71.9	113.0	44.9	3.7	23.8	109.7	77.3	15.3	229.8
ROOM OCCUPANCY RATES (%)									
1998									
March quarter	43.4	43.0	48.9	n.p.	31.4	49.9	48.5	n.p.	44.1
1999									
January	34.4	36.6	44.5	27.3	24.5	42.5	37.5	35.9	37.2
February	43.6	41.6	47.3	31.3	25.5	47.4	47.5	43.2	43.2
March	43.2	46.4	52.8	33.5	31.1	51.1	49.7	42.1	46.4
March quarter	40.3	41.5	48.2	30.7	27.1	47.0	44.8	40.3	42.2
GUEST NIGHTS ('000)									
1998									
March quarter	112.7	192.9	74.6	n.p.	51.6	180.3	75.5	n.p.	380.2
1999									
January	34.2	58.2	27.4	1.8	15.0	57.3	37.2	8.5	119.8
February	35.8	55.6	22.4	1.5	11.4	54.3	38.1	8.5	113.8
March	43.4	67.3	28.2	1.8	16.7	67.7	44.5	8.1	138.8
March quarter	113.4	181.1	78.0	5.1	43.1	179.3	119.8	25.1	372.5
BED OCCUPANCY RATES (%)									
1998									
March quarter	22.9	23.5	26.4	n.p.	17.7	27.1	26.6	n.p.	23.8
1999									
January	19.6	20.8	27.4	18.1	16.6	23.7	21.5	21.6	21.6
February	22.7	21.9	25.1	16.4	13.9	25.0	24.4	24.0	22.7
March	24.8	24.0	28.4	17.9	18.5	28.0	25.7	20.5	25.0
March quarter	22.4	22.2	27.0	17.5	16.4	25.6	23.8	22.0	23.1

(a) Comprising establishments with 15 or more rooms or units. See Explanatory Notes, paragraph 6.

STAR GRADING

Period	Licensed hotels with facilities	Motels and guest houses	Serviced apartments	1	2	3	4 and 5	Ungraded	Total
GUEST ARRIVALS ('000)									
1998									
March quarter	59.9	104.5	29.7	<i>n.p.</i>	27.2	98.6	35.0	<i>n.p.</i>	194.1
1999									
January	19.9	33.0	9.9	1.0	9.7	32.4	15.9	3.9	62.8
February	21.9	32.8	8.2	0.7	7.0	33.7	17.8	3.7	62.9
March	26.3	38.9	9.9	0.9	10.0	40.1	20.4	3.7	75.1
March quarter	68.1	104.6	28.0	2.6	26.7	106.1	54.1	11.3	200.8
AVERAGE LENGTH OF STAY (days)									
1998									
March quarter	1.9	1.8	2.5	<i>n.p.</i>	1.9	1.8	2.2	<i>n.p.</i>	2.0
1999									
March quarter	1.7	1.7	2.8	2.0	1.6	1.7	2.2	2.2	1.9
TAKINGS FROM ACCOMMODATION (\$'000)									
1998									
March quarter	9 123	9 375	3 778	<i>n.p.</i>	1 831	10 358	6 234	<i>n.p.</i>	22 277
1999									
January	2 342	2 977	1 297	50	472	3 372	2 425	296	6 616
February	2 792	3 214	1 240	54	436	3 562	2 866	327	7 245
March	2 983	3 646	1 575	64	618	3 969	3 190	364	8 204
March quarter	8 117	9 836	4 112	168	1 527	10 903	8 481	987	22 065
AVERAGE TAKINGS PER ROOM NIGHT OCCUPIED (\$)									
1998									
March quarter	121.0	80.2	87.2	<i>n.p.</i>	58.5	98.2	124.7	<i>n.p.</i>	94.6
1999									
January	110.7	86.8	90.7	44.3	63.7	98.5	108.9	63.2	94.9
February	115.3	91.2	90.8	45.6	62.7	103.6	112.5	64.2	99.1
March	112.4	83.8	93.1	45.9	65.7	96.6	107.9	66.2	94.3
March quarter	112.9	87.0	91.6	45.3	64.2	99.4	109.7	64.6	96.0
AVERAGE TAKINGS PER AVAILABLE ROOM NIGHT (\$)									
1998									
March quarter	52.5	34.5	42.7	<i>n.p.</i>	18.4	49.0	60.5	<i>n.p.</i>	41.7
1999									
January	38.1	31.7	40.3	12.1	15.6	41.9	40.8	22.7	35.3
February	50.3	37.9	43.0	14.3	16.0	49.1	53.4	27.7	42.8
March	48.5	38.9	49.1	15.4	20.4	49.4	53.7	27.9	43.8
March quarter	45.5	36.1	44.2	13.9	17.4	46.7	49.2	26.1	40.6

(a) Comprising establishments with 15 or more rooms or units. See Explanatory Notes, paragraph 6.

STAR GRADING

<i>Period</i>	<i>Licensed hotels with facilities</i>	<i>Motels and guest houses</i>	<i>Serviced apartments</i>	<i>1 and ungraded</i>	<i>2</i>	<i>3</i>	<i>4 and 5</i>	<i>Total</i>
ESTABLISHMENTS, CAPACITY AND EMPLOYMENT (number)								
March quarter 1998								
Establishments	13	23	13	2	10	21	16	49
Guest rooms	1 669	1 660	832	n.p.	n.p.	1 575	1 811	4 161
Bed spaces	4 231	5 193	3 395	n.p.	n.p.	4 803	5 426	12 819
Persons employed	1 706	567	318	n.p.	n.p.	705	1 549	2 591
March quarter 1999								
Establishments	14	24	16	9	7	22	16	54
Guest rooms	1 767	1 702	1 179	703	404	1 729	1 812	4 648
Bed spaces	4 570	5 400	4 058	1 710	1 655	5 214	5 449	14 028
Persons employed	1 361	554	434	197	109	731	1 312	2 349
ROOM NIGHTS OCCUPIED ('000)								
1998								
<i>March quarter</i>	101.8	85.4	55.6	n.p.	n.p.	90.0	119.2	242.8
1999								
January	26.4	23.6	21.0	6.6	6.2	24.7	33.4	71.0
February	30.7	24.8	21.3	9.2	5.3	26.2	36.2	76.8
March	38.2	30.3	24.8	11.7	5.8	34.0	41.8	93.3
<i>March quarter</i>	95.3	78.7	67.1	27.5	17.3	85.0	111.4	241.1
ROOM OCCUPANCY RATES (%)								
1998								
<i>March quarter</i>	67.8	57.2	74.2	n.p.	n.p.	63.5	73.1	64.8
1999								
January	48.1	44.7	57.5	30.3	49.8	46.1	59.5	49.3
February	62.1	52.0	64.5	46.7	46.4	54.1	71.3	59.0
March	69.7	57.5	67.9	53.6	46.3	63.5	74.4	64.8
<i>March quarter</i>	59.9	51.4	63.2	43.4	47.5	54.6	68.3	57.6
GUEST NIGHTS ('000)								
1998								
<i>March quarter</i>	157.9	150.4	107.4	n.p.	n.p.	153.9	194.6	415.7
1999								
January	47.2	45.4	45.3	10.8	16.2	48.7	62.2	137.9
February	44.0	39.8	34.3	12.3	10.5	42.0	53.3	118.1
March	53.7	51.1	41.6	16.4	11.6	56.0	62.4	146.4
<i>March quarter</i>	144.9	136.4	121.2	39.5	38.2	146.7	177.9	402.4
BED OCCUPANCY RATES (%)								
1998								
<i>March quarter</i>	41.5	32.2	35.1	n.p.	n.p.	35.6	39.8	36.0
1999								
January	33.3	27.1	36.0	20.4	31.5	30.1	36.8	31.7
February	34.4	26.3	30.2	25.7	22.6	28.8	34.9	30.1
March	37.9	30.5	33.1	30.9	22.6	34.7	37.0	33.7
<i>March quarter</i>	35.2	28.1	33.2	25.7	25.7	31.3	36.3	31.9

(a) Comprising establishments with 15 or more rooms or units. See Explanatory Notes, paragraph 6.

STAR GRADING

<i>Period</i>	<i>Licensed hotels with facilities</i>	<i>Motels and guest houses</i>	<i>Serviced apartments</i>	<i>1 and ungraded</i>	<i>2</i>	<i>3</i>	<i>4 and 5</i>	<i>Total</i>
GUEST ARRIVALS ('000)								
1998								
<i>March quarter</i>	81.1	80.2	28.7	<i>n.p.</i>	<i>n.p.</i>	72.3	88.4	189.9
1999								
January	21.1	22.5	13.4	4.0	6.8	23.4	22.9	57.0
February	22.6	21.3	11.8	4.9	5.4	20.5	24.8	55.7
March	26.9	26.8	13.6	6.7	6.7	24.8	29.0	67.2
<i>March quarter</i>	70.6	70.6	38.8	15.5	19.0	68.7	76.7	180.0
AVERAGE LENGTH OF STAY (days)								
1998								
<i>March quarter</i>	1.9	1.9	3.7	<i>n.p.</i>	<i>n.p.</i>	2.1	2.2	2.2
1999								
<i>March quarter</i>	2.1	1.9	3.1	2.5	2.0	2.1	2.3	2.2
TAKINGS FROM ACCOMMODATION (\$'000)								
1998								
<i>March quarter</i>	12 029	6 185	6 065	<i>n.p.</i>	<i>n.p.</i>	7 554	14 534	24 279
1999								
January	2 860	1 769	2 277	474	449	2 052	3 931	6 905
February	3 562	1 883	2 144	624	370	2 125	4 469	7 589
March	4 520	2 293	2 414	813	396	2 821	5 198	9 227
<i>March quarter</i>	10 942	5 945	6 834	1 911	1 214	6 997	13 599	23 721
AVERAGE TAKINGS PER ROOM NIGHT OCCUPIED (\$)								
1998								
<i>March quarter</i>	118.2	72.4	109.2	<i>n.p.</i>	<i>n.p.</i>	83.9	121.9	100.0
1999								
January	108.5	74.9	108.4	71.7	71.9	83.0	117.7	97.3
February	115.8	76.0	100.8	67.9	70.5	81.1	123.6	98.8
March	118.4	75.6	97.3	69.6	68.3	82.9	124.3	98.9
<i>March quarter</i>	114.8	75.5	101.9	69.6	70.2	82.4	122.1	98.4
AVERAGE TAKINGS PER AVAILABLE ROOM NIGHT (\$)								
1998								
<i>March quarter</i>	80.1	41.4	81.0	<i>n.p.</i>	<i>n.p.</i>	53.3	89.2	64.8
1999								
January	52.2	33.5	62.3	21.8	35.8	38.3	70.0	47.9
February	72.0	39.5	65.0	31.7	32.7	43.9	88.1	58.3
March	82.5	43.5	66.0	37.3	31.6	52.6	92.5	64.0
<i>March quarter</i>	68.8	38.8	64.4	30.2	33.4	45.0	83.4	56.7

(a) Comprising establishments with 15 or more rooms or units. See Explanatory Notes, paragraph 6.

STAR GRADING

Period	Licensed	Motels	Serviced	STAR GRADING					Ungraded	Total
	hotels with facilities	and guest houses		apartments	1	2	3	4		
ESTABLISHMENTS, CAPACITY AND EMPLOYMENT (number)										
March quarter 1998										
Establishments	750	2 377	482	62	635	1 778	433	55	646	3 609
Guest rooms	69 124	83 427	21 643	1 784	19 156	68 116	42 605	14 498	28 035	174 194
Bed spaces	185 113	249 154	77 423	5 896	55 435	202 616	124 224	36 871	86 648	511 690
Persons employed	72 522	31 150	8 386	682	7 505	28 949	33 532	24 949	16 441	112 058
March quarter 1998										
Establishments	753	2 386	564	74	566	1 864	705	66	428	3 703
Guest rooms	71 637	84 614	27 610	2 202	16 513	69 905	58 580	16 423	20 238	183 861
Bed spaces	193 366	251 693	96 217	6 757	49 761	209 625	175 353	44 190	55 590	541 276
Persons employed	70 611	30 938	10 074	866	6 768	27 595	38 578	29 157	8 659	111 623
ROOM NIGHTS OCCUPIED ('000)										
1998										
March quarter	3 816.8	4 033.8	1 205.5	50.0	763.6	3 447.1	2 507.8	967.4	1 320.2	9 056.0
1999										
January	1 282.8	1 377.3	554.0	23.2	233.1	1 189.0	1 141.9	341.6	285.4	3 214.1
February	1 303.1	1 255.6	445.8	20.2	194.9	1 066.2	1 107.0	342.2	274.0	3 004.5
March	1 417.7	1 450.2	499.3	23.1	228.7	1 229.6	1 207.3	368.8	309.6	3 367.1
March quarter	4 003.5	4 083.2	1 499.1	66.6	656.7	3 484.8	3 456.1	1 052.6	869.0	9 585.8
ROOM OCCUPANCY RATES (%)										
1998										
March quarter	61.6	53.9	62.4	31.3	44.5	56.3	65.8	74.2	52.8	58.0
1999										
January	58.2	52.7	65.2	34.0	45.6	54.9	62.9	67.1	47.5	56.7
February	65.4	53.1	58.0	32.8	42.3	54.5	67.5	74.4	50.3	58.7
March	63.9	55.3	58.4	33.9	44.9	56.8	66.5	72.4	49.4	59.1
March quarter	62.4	53.7	60.6	33.6	44.3	55.4	65.6	71.2	49.0	58.1
GUEST NIGHTS ('000)										
1998										
March quarter	6 209.9	7 193.5	2 648.0	80.0	1 375.1	6 187.1	4 302.1	1 515.8	2 591.3	16 051.3
1999										
January	2 317.8	2 734.0	1 352.6	40.8	478.0	2 460.9	2 275.0	615.1	534.6	6 404.3
February	2 044.4	2 095.9	898.4	31.6	339.0	1 851.0	1 825.2	549.1	442.8	5 038.6
March	2 213.3	2 446.3	1 010.0	35.9	407.3	2 151.9	1 994.1	576.5	503.9	5 669.6
March quarter	6 575.5	7 276.1	3 260.9	108.3	1 224.3	6 463.7	6 094.3	1 740.7	1 481.3	17 112.5
BED OCCUPANCY RATES (%)										
1998										
March quarter	37.4	32.2	38.3	15.1	27.7	34.0	38.6	45.7	33.5	35.0
1999										
January	38.9	35.1	45.6	19.5	31.0	37.9	41.9	44.9	32.2	38.3
February	38.0	29.8	33.5	16.7	24.4	31.6	37.2	44.4	29.4	33.4
March	37.0	31.4	33.9	17.1	26.5	33.2	36.7	42.1	29.3	33.8
March quarter	38.0	32.2	37.8	17.8	27.4	34.3	38.6	43.8	30.3	35.2

(a) Comprising establishments with 15 or more rooms or units. See Explanatory Notes, paragraph 6.

STAR GRADING

Period	Licensed hotels with facilities	Motels and guest houses	Serviced apartments	1	2	3	4	5	Ungraded	Total
GUEST ARRIVALS ('000)										
1998										
March quarter	2 688.9	3 895.3	715.0	36.7	747.5	3 165.6	1 916.0	547.1	886.2	7 299.2
1999										
January	910.5	1 451.0	325.1	21.0	258.4	1 195.9	823.8	198.3	189.1	2 686.6
February	907.7	1 144.8	260.4	16.4	191.9	945.6	782.4	208.9	167.8	2 312.9
March	964.6	1 343.7	289.8	18.9	229.8	1 107.4	835.4	215.9	190.8	2 598.1
March quarter	2 782.9	3 939.5	875.3	56.3	680.1	3 248.9	2 441.5	623.1	547.8	7 597.6
AVERAGE LENGTH OF STAY (days)										
1998										
March quarter	2.3	1.8	3.7	2.2	1.8	2.0	2.2	2.8	2.9	2.2
1999										
March quarter	2.4	1.8	3.7	1.9	1.8	2.0	2.5	2.8	2.7	2.3
TAKINGS FROM ACCOMMODATION (\$'000)										
1998										
March quarter	505 731	314 800	134 968	2 190	45 815	279 057	306 856	185 049	136 532	955 499
1999										
January	161 649	110 820	64 029	1 206	15 536	97 831	132 169	62 535	27 220	336 498
February	167 102	98 330	48 370	1 018	11 774	83 632	127 163	63 122	27 094	313 802
March	185 415	113 045	54 300	1 127	13 880	95 958	142 375	68 648	30 772	352 760
March quarter	514 165	322 196	166 699	3 351	41 190	277 421	401 708	194 304	85 086	1 003 060
AVERAGE TAKINGS PER ROOM NIGHT OCCUPIED (\$)										
1998										
March quarter	132.5	78.0	112.0	43.8	60.0	81.0	122.4	191.3	103.4	105.5
1999										
January	126.0	80.5	115.6	52.0	66.7	82.3	115.7	183.1	95.4	104.7
February	128.2	78.3	108.5	50.3	60.4	78.4	114.9	184.5	98.9	104.4
March	130.8	78.0	108.8	48.7	60.7	78.0	117.9	186.1	99.4	104.8
March quarter	128.4	78.9	111.2	50.4	62.7	79.6	116.2	184.6	97.9	104.6
AVERAGE TAKINGS PER AVAILABLE ROOM NIGHT (\$)										
1998										
March quarter	81.7	42.0	69.9	13.7	26.7	45.6	80.5	141.9	54.6	61.2
1999										
January	73.3	42.4	75.4	17.7	30.4	45.1	72.9	122.8	45.3	59.3
February	83.9	41.6	63.0	16.5	25.6	42.8	77.5	137.3	49.7	61.3
March	83.6	43.1	63.6	16.5	27.2	44.3	78.4	134.8	49.1	61.9
March quarter	80.2	42.4	67.4	16.9	27.8	44.1	76.2	131.5	48.0	60.8

(a) Comprising establishments with 15 or more rooms or units. See Explanatory Notes, paragraph 6.

Period	South Coast	Illawarra	Sydney	Snowy Mountains	Capital Country	Murray	Riverina	Central West
ESTABLISHMENTS, CAPACITY AND EMPLOYMENT (number)								
March quarter 1998								
Establishments	84	56	251	57	44	96	68	118
Guest rooms	2 092	1 821	25 741	2 154	1 391	2 794	1 869	3 354
Bed spaces	6 580	5 155	66 379	8 261	4 158	9 002	5 586	10 426
Persons employed	644	1 231	21 902	322	466	932	610	1 236
March quarter 1999								
Establishments	83	55	269	57	45	99	70	117
Guest rooms	2 036	1 772	28 468	2 230	1 447	2 830	1 949	3 336
Bed spaces	6 242	5 310	72 712	8 575	4 282	9 144	5 825	10 363
Persons employed	599	1 060	20 930	341	480	948	674	1 276
ROOM NIGHTS OCCUPIED ('000)								
1998								
March quarter	101.5	88.0	1 664.9	27.7	58.4	126.4	84.1	143.6
1999								
January	40.1	28.3	561.7	12.0	19.6	47.2	29.5	48.0
February	29.0	27.3	616.3	8.4	18.2	39.0	26.6	41.8
March	32.2	29.1	650.7	10.7	22.4	50.3	33.0	54.6
March quarter	101.3	84.7	1 828.8	31.2	60.2	136.4	89.0	144.4
ROOM OCCUPANCY RATES (%)								
1998								
March quarter	53.9	53.7	71.9	14.3	46.6	50.3	50.0	47.6
1999								
January	63.6	53.2	65.2	17.4	43.7	53.8	48.9	46.4
February	50.9	55.4	79.1	13.5	45.0	49.2	49.1	44.7
March	51.0	53.0	73.8	15.5	49.9	57.3	55.0	52.8
March quarter	55.3	53.8	72.5	15.5	46.2	53.6	51.1	48.1
GUEST NIGHTS ('000)								
1998								
March quarter	209.8	161.8	2 728.2	57.2	106.2	244.4	136.3	254.2
1999								
January	93.6	58.4	985.7	27.3	39.9	102.6	53.0	98.9
February	53.9	45.1	982.8	15.4	29.0	68.4	40.7	67.3
March	59.0	49.1	1 029.3	19.9	37.6	91.3	51.5	90.9
March quarter	206.5	152.7	2 997.8	62.6	106.5	262.2	145.3	257.2
GUEST ARRIVALS ('000)								
1998								
March quarter	118.0	86.4	1 109.8	29.5	72.8	134.8	101.1	182.8
1999								
January	49.3	29.5	362.3	12.5	28.0	55.1	40.1	76.2
February	32.4	25.1	390.2	7.4	19.2	40.8	30.0	48.6
March	35.3	27.4	408.1	9.9	26.2	53.4	37.4	63.6
March quarter	117.0	82.1	1 160.6	29.9	73.4	149.3	107.4	188.4
TAKINGS FROM ACCOMMODATION (\$'000)								
1998								
March quarter	7 255	8 454	235 516	1 891	3 706	8 702	5 204	9 161
1999								
January	3 348	2 711	73 804	964	1 298	3 351	1 873	3 183
February	1 895	2 673	85 271	549	1 179	2 661	1 704	2 653
March	2 108	2 854	89 922	659	1 478	3 419	2 082	3 498
March quarter	7 351	8 237	248 997	2 172	3 954	9 431	5 658	9 335

Period	Hunter	Mid North Coast	Holiday Coast	Northern Rivers	New England/ North West	Outback	Central Coast	Blue Mountains
ESTABLISHMENTS, CAPACITY AND EMPLOYMENT (number)								
March quarter 1998								
Establishments	90	85	46	73	89	37	36	33
Guest rooms	3 164	2 177	1 716	1 954	2 412	905	1 322	1 258
Bed spaces	10 426	6 913	5 680	6 250	7 271	2 693	4 507	3 692
Persons employed	2 079	789	1 051	572	812	255	951	977
March quarter 1999								
Establishments	96	87	46	75	89	37	37	32
Guest rooms	3 440	2 219	1 768	1 986	2 453	907	1 342	1 259
Bed spaces	11 239	6 877	5 792	6 278	7 406	2 653	4 613	3 708
Persons employed	2 142	773	1 011	598	825	250	915	1 002
ROOM NIGHTS OCCUPIED ('000)								
1998								
<i>March quarter</i>	158.8	109.7	98.1	85.9	107.7	32.6	71.6	58.3
1999								
January	55.9	45.3	40.3	34.3	39.4	10.4	27.9	20.2
February	51.2	30.3	27.1	24.4	31.9	9.3	22.1	18.5
March	58.6	34.6	30.0	27.7	41.2	13.6	22.6	20.6
<i>March quarter</i>	165.7	110.3	97.4	86.4	112.6	33.2	72.6	59.2
ROOM OCCUPANCY RATES (%)								
1998								
<i>March quarter</i>	55.8	56.0	63.6	48.8	49.6	40.1	60.1	51.5
1999								
January	53.5	65.8	73.5	56.1	51.9	36.9	67.0	51.7
February	53.6	49.4	54.7	44.3	46.5	36.4	58.8	52.4
March	55.0	51.4	54.7	45.0	54.2	48.3	54.3	52.8
<i>March quarter</i>	54.1	55.8	61.2	48.6	51.0	40.7	60.1	52.3
GUEST NIGHTS ('000)								
1998								
<i>March quarter</i>	289.1	224.5	220.8	166.5	188.1	53.5	151.1	109.6
1999								
January	121.5	106.8	91.6	77.0	80.1	19.1	67.2	41.7
February	88.6	55.3	49.0	44.0	50.0	14.4	49.4	32.0
March	102.0	62.7	56.9	50.1	68.0	21.9	43.1	37.0
<i>March quarter</i>	312.1	224.8	197.5	171.1	198.1	55.3	159.7	110.7
GUEST ARRIVALS ('000)								
1998								
<i>March quarter</i>	164.1	128.5	95.6	99.7	127.1	36.5	64.3	53.7
1999								
January	59.9	59.5	44.6	43.8	52.9	13.4	29.4	18.9
February	50.8	36.0	26.8	28.6	35.9	9.3	22.1	16.6
March	57.7	41.3	30.1	30.9	47.9	13.7	24.2	20.1
<i>March quarter</i>	168.4	136.7	101.5	103.3	136.7	36.4	75.8	55.5
TAKINGS FROM ACCOMMODATION (\$'000)								
1998								
<i>March quarter</i>	16 445	8 269	9 764	6 125	6 830	1 805	7 735	6 385
1999								
January	6 184	3 974	4 620	2 888	2 838	595	3 307	2 249
February	5 145	2 133	2 199	1 708	2 020	515	2 366	2 138
March	5 941	2 415	2 330	1 843	2 639	768	2 386	2 339
<i>March quarter</i>	17 271	8 522	9 149	6 439	7 497	1 877	8 058	6 726

Period	Melbourne	Wimmera	Mallee	Western	Western Grampians	Bendigo Loddon	Peninsula	Central Murray	Goulburn	High Country
ESTABLISHMENTS, CAPACITY AND EMPLOYMENT (number)										
March quarter 1998										
Establishments	191	6	43	56	21	28	20	21	27	75
Guest rooms	15 351	119	1 294	1 498	499	696	663	559	677	1 995
Bed spaces	37 590	336	3 942	4 743	1 459	2 132	1 875	1 611	2 016	6 796
Persons employed	15 705	28	453	722	177	333	396	176	315	582
March quarter 1999										
Establishments	213	6	42	56	21	28	20	21	27	73
Guest rooms	17 019	117	1 275	1 499	496	698	661	558	677	1 944
Bed spaces	42 996	332	3 888	4 725	1 441	2 147	1 841	1 600	2 006	7 039
Persons employed	15 422	30	492	743	200	320	378	163	349	568
ROOM NIGHTS OCCUPIED ('000)										
1998										
March quarter	975.1	3.6	48.7	88.1	20.7	32.2	32.8	25.7	31.7	50.1
1999										
January	342.5	1.1	16.4	34.5	6.0	9.6	12.7	9.2	9.7	18.7
February	357.1	0.9	13.4	27.8	6.8	9.4	9.9	7.5	10.0	13.8
March	412.6	1.3	19.6	30.4	8.0	13.0	9.4	9.1	11.0	17.3
March quarter	1 112.2	3.2	49.4	92.7	20.9	32.1	32.0	25.8	30.7	49.8
ROOM OCCUPANCY RATES (%)										
1998										
March quarter	71.7	34.0	41.8	65.4	46.1	51.5	55.6	51.2	52.0	27.9
1999										
January	65.1	29.3	41.4	74.2	39.2	44.4	62.0	53.2	46.2	31.0
February	75.3	26.3	37.6	66.2	49.0	48.2	53.6	48.0	52.5	25.3
March	78.3	35.7	49.5	65.5	52.2	60.2	45.8	52.4	52.5	28.7
March quarter	72.8	30.5	43.0	68.7	46.7	51.0	53.8	51.3	50.3	28.5
GUEST NIGHTS ('000)										
1998										
March quarter	1 561.3	6.0	86.3	182.6	33.6	57.7	56.8	48.6	53.3	105.4
1999										
January	598.3	2.1	32.0	82.9	11.6	19.9	27.6	18.5	17.0	43.3
February	535.7	1.3	20.9	54.5	10.6	15.7	17.7	13.2	16.1	29.6
March	631.1	2.3	32.4	57.4	13.0	23.4	16.8	15.7	17.1	37.0
March quarter	1 765.1	5.7	85.3	194.8	35.1	59.0	62.1	47.4	50.2	109.9
GUEST ARRIVALS ('000)										
1998										
March quarter	667.7	4.9	54.1	107.2	25.8	39.9	27.1	30.9	34.1	51.5
1999										
January	228.8	1.7	19.8	41.2	9.4	13.4	12.1	10.9	11.0	20.0
February	236.7	1.1	13.8	31.4	8.4	11.8	9.1	7.9	10.3	16.6
March	259.0	1.9	20.0	34.0	9.6	16.0	9.2	9.7	11.5	21.9
March quarter	724.6	4.7	53.5	106.5	27.4	41.1	30.4	28.4	32.8	58.6
TAKINGS FROM ACCOMMODATION (\$'000)										
1998										
March quarter	132 610	180	3 010	7 628	1 287	2 417	3 783	1 849	2 062	3 745
1999										
January	43 549	56	1 070	3 351	404	747	1 474	678	634	1 565
February	47 308	42	847	2 355	442	715	1 192	540	655	1 033
March	59 252	66	1 247	2 487	517	981	1 122	635	732	1 319
March quarter	150 110	164	3 165	8 194	1 363	2 443	3 788	1 854	2 021	3 916

Period	Lakes	Gippsland	Melbourne East	Geelong	Macedon	Spa Country	Ballarat	Central Highlands	Upper Yarra	Murray East	Phillip Island
ESTABLISHMENTS, CAPACITY AND EMPLOYMENT (number)											
March quarter 1998											
Establishments	24	38	12	23	3	5	24	15	13	14	9
Guest rooms	654	1 082	381	711	91	119	803	359	442	318	292
Bed spaces	1 945	3 017	935	2 069	195	361	2 562	1 134	1 134	983	1 001
Persons employed	230	376	343	366	62	87	392	108	244	77	150
March quarter 1999											
Establishments	24	37	13	22	3	5	24	15	13	14	9
Guest rooms	662	1 054	406	694	91	119	806	359	425	320	280
Bed spaces	1 982	3 060	947	2 024	195	354	2 596	1 127	1 133	982	1 005
Persons employed	233	359	405	363	64	83	397	94	249	79	138
ROOM NIGHTS OCCUPIED ('000)											
1998											
March quarter	29.7	41.1	14.1	36.4	2.8	5.0	38.2	14.5	12.6	14.0	17.1
1999											
January	11.4	13.5	4.2	14.4	0.5	1.5	10.8	4.4	4.0	5.3	6.8
February	7.5	14.5	5.0	13.2	1.1	1.6	11.7	4.6	4.0	3.7	5.1
March	8.6	16.8	4.9	13.1	1.3	2.2	14.7	5.5	5.7	5.6	4.9
March quarter	27.5	44.8	14.1	40.8	2.9	5.3	37.2	14.4	13.7	14.6	16.8
ROOM OCCUPANCY RATES (%)											
1998											
March quarter	50.5	42.2	41.0	56.8	33.8	46.3	52.9	45.0	31.7	48.9	65.0
1999											
January	55.4	41.3	33.6	67.0	19.3	41.8	43.4	39.2	30.1	53.8	78.9
February	40.6	49.1	44.1	68.1	41.4	48.4	51.7	45.4	34.0	41.6	65.2
March	41.9	51.4	38.9	61.0	47.3	58.7	58.7	49.0	43.3	56.2	56.1
March quarter	46.1	47.2	38.7	65.3	35.8	49.7	51.3	44.5	35.9	50.8	66.8
GUEST NIGHTS ('000)											
1998											
March quarter	58.2	64.0	20.3	66.8	3.3	8.5	79.4	28.1	20.5	26.3	41.3
1999											
January	26.7	21.1	6.4	28.8	0.7	3.0	25.6	8.8	6.3	11.0	18.7
February	14.1	20.1	7.1	21.9	1.2	2.7	22.8	8.4	5.8	6.4	11.2
March	16.2	23.7	6.8	22.7	1.5	3.6	29.5	10.5	8.6	9.9	10.7
March quarter	57.0	64.9	20.3	73.4	3.4	9.2	77.9	27.7	20.7	27.3	40.6
GUEST ARRIVALS ('000)											
1998											
March quarter	35.9	37.5	11.0	36.7	2.2	4.8	50.7	18.7	11.3	17.4	20.0
1999											
January	16.8	11.5	3.6	15.3	0.5	1.6	16.5	6.0	3.4	6.6	9.4
February	10.0	10.8	3.9	11.2	0.8	1.3	14.0	5.5	3.2	4.2	6.8
March	11.5	13.2	3.9	13.5	0.9	1.9	18.0	6.8	4.2	6.3	7.2
March quarter	38.3	35.5	11.5	39.9	2.2	4.9	48.5	18.3	10.9	17.1	23.4
TAKINGS FROM ACCOMMODATION (\$'000)											
1998											
March quarter	1 888	2 467	1 437	2 982	288	533	2 914	946	1 338	751	1 482
1999											
January	897	878	459	1 270	56	169	876	327	386	295	692
February	485	921	492	1 252	117	200	865	301	459	203	408
March	541	1 114	541	1 110	140	240	1 152	373	651	295	394
March quarter	1 922	2 913	1 492	3 632	313	609	2 893	1 001	1 496	793	1 494

<i>Period</i>	<i>Gold Coast</i>	<i>Brisbane (r)</i>	<i>Sunshine Coast</i>	<i>Hervey Bay/ Maryborough</i>	<i>Darling Downs</i>	<i>Bundaberg</i>
ESTABLISHMENTS, CAPACITY AND EMPLOYMENT (number)						
March quarter 1998						
Establishments	131	147	87	43	61	23
Guest rooms	11 706	8 330	3 388	1 522	1 502	549
Bed spaces	38 268	24 235	12 049	5 207	4 634	1 657
Persons employed	8 355	6 579	2 201	660	575	194
March quarter 1999						
Establishments	144	155	93	44	60	23
Guest rooms	12 887	9 244	4 101	1 587	1 506	549
Bed spaces	43 303	26 721	14 126	5 432	4 726	1 664
Persons employed	8 491	6 698	2 409	702	562	189
ROOM NIGHTS OCCUPIED ('000)						
1998						
<i>March quarter</i>	627.6	431.0	171.7	60.2	67.3	27.0
1999						
January	292.6	147.7	81.1	27.1	20.5	8.6
February	208.8	153.2	50.4	18.3	21.0	8.2
March	217.8	173.6	54.0	22.6	23.9	9.4
<i>March quarter</i>	719.1	474.5	185.5	68.0	65.3	26.2
ROOM OCCUPANCY RATES (%)						
1998						
<i>March quarter</i>	59.7	57.7	57.6	43.9	49.8	54.7
1999						
January	73.2	51.5	65.0	55.0	43.9	50.8
February	57.9	59.2	44.5	41.2	49.8	53.1
March	54.5	60.6	42.7	46.0	51.1	55.2
<i>March quarter</i>	62.0	57.0	50.9	47.6	48.2	53.0
GUEST NIGHTS ('000)						
1998						
<i>March quarter</i>	1 330.9	696.6	423.0	126.8	119.0	44.6
1999						
January	694.5	261.4	221.8	62.8	41.0	17.4
February	440.9	235.3	115.6	33.4	35.8	13.2
March	461.9	264.7	130.7	42.9	39.7	14.8
<i>March quarter</i>	1 597.3	761.3	468.1	139.1	116.5	45.5
GUEST ARRIVALS ('000)						
1998						
<i>March quarter</i>	414.7	335.6	132.0	62.7	79.9	29.0
1999						
January	173.1	111.2	52.2	28.4	28.5	11.9
February	135.5	111.6	36.4	18.0	23.6	8.9
March	140.3	124.2	40.6	22.3	27.6	10.0
<i>March quarter</i>	448.9	346.9	129.2	68.8	79.7	30.8
TAKINGS FROM ACCOMMODATION (\$'000)						
1998						
<i>March quarter</i>	68 439	42 175	20 372	4 331	4 094	1 849
1999						
January	31 206	13 232	10 611	2 211	1 335	688
February	19 951	14 308	5 626	1 194	1 329	585
March	20 856	16 814	5 756	1 566	1 521	658
<i>March quarter</i>	72 013	44 354	21 992	4 971	4 186	1 931

<i>Period</i>	<i>Fitzroy</i>	<i>Mackay</i>	<i>Whitsundays</i>	<i>Northern</i>	<i>Tropical North Queensland</i>	<i>Outback</i>	<i>Great Barrier Reef (r)</i>
ESTABLISHMENTS, CAPACITY AND EMPLOYMENT (number)							
March quarter 1998							
Establishments	78	52	18	56	143	48	19
Guest rooms	2 908	1 680	2 366	2 393	9 739	1 231	2 749
Bed spaces	9 330	5 073	9 048	7 255	29 960	3 437	9 695
Persons employed	1 525	932	2 074	1 404	5 234	477	2 642
March quarter 1999							
Establishments	79	52	17	55	148	50	20
Guest rooms	2 933	1 668	2 312	2 407	10 005	1 276	2 782
Bed spaces	9 525	4 958	8 686	7 169	31 014	3 596	9 574
Persons employed	1 618	922	1 899	1 463	5 165	509	2 581
ROOM NIGHTS OCCUPIED ('000)							
1998							
<i>March quarter</i>	132.7	81.9	113.5	114.1	427.8	47.2	139.0
1999							
January	44.3	28.1	49.5	38.0	147.6	17.1	59.8
February	43.3	24.5	31.4	37.7	137.9	18.4	37.1
March	46.9	27.3	37.4	43.2	155.8	22.5	44.7
<i>March quarter</i>	134.4	79.9	118.3	118.8	441.3	58.0	141.7
ROOM OCCUPANCY RATES (%)							
1998							
<i>March quarter</i>	50.7	54.2	53.3	54.1	48.9	42.8	57.6
1999							
January	48.7	54.4	69.1	50.9	47.7	43.3	69.4
February	52.7	52.4	48.5	55.9	49.5	51.5	47.8
March	51.5	52.8	52.2	57.9	50.5	56.9	51.8
<i>March quarter</i>	50.9	53.3	56.9	54.8	49.2	50.5	56.6
GUEST NIGHTS ('000)							
1998							
<i>March quarter</i>	225.3	137.4	250.1	173.1	817.7	64.9	298.5
1999							
January	88.9	54.3	121.1	66.6	301.1	26.0	143.6
February	66.7	39.3	63.6	54.1	259.1	24.5	77.3
March	73.2	44.0	79.2	65.1	294.3	31.2	96.1
<i>March quarter</i>	228.8	137.6	263.9	185.7	854.5	81.7	317.1
GUEST ARRIVALS ('000)							
1998							
<i>March quarter</i>	112.8	58.9	74.9	86.2	268.7	37.6	76.1
1999							
January	45.3	22.9	31.6	30.5	89.6	14.9	33.4
February	35.6	17.0	20.5	27.5	83.9	12.6	22.6
March	38.7	20.4	24.9	31.5	89.6	15.6	27.2
<i>March quarter</i>	119.5	60.3	76.9	89.6	263.1	43.1	83.2
TAKINGS FROM ACCOMMODATION (\$'000)							
1998							
<i>March quarter</i>	10 749	5 736	17 706	8 112	48 252	2 746	25 218
1999							
January	3 802	2 186	8 324	2 750	16 224	985	11 349
February	3 196	1 707	5 082	2 605	14 788	1 109	6 847
March	3 507	1 823	5 589	3 199	16 717	1 359	7 639
<i>March quarter</i>	10 505	5 715	18 995	8 554	47 729	3 452	25 836

Period	South East	Murray-lands	Fleurieu Peninsula	Adelaide	Barossa Valley	Riverland	Mid North	Flinders Ranges	Far North	Eyre Peninsula	Yorke Peninsula	Kangaroo Island
ESTABLISHMENTS, CAPACITY AND EMPLOYMENT (number)												
March quarter 1998												
Establishments	33	4	13	86	7	14	5	18	8	25	7	7
Guest rooms	930	96	444	5 287	210	525	137	609	367	770	136	204
Bed spaces	2 870	308	1 359	14 745	656	1 561	408	1 854	1 063	2 210	434	585
Persons employed	409	50	253	3 780	189	495	90	245	194	525	49	106
March quarter 1999												
Establishments	32	4	13	89	7	14	5	19	7	25	7	6
Guest rooms	911	96	451	5 633	210	525	144	637	354	785	133	181
Bed spaces	2 775	301	1 389	15 367	645	1 558	425	1 969	1 010	2 325	388	550
Persons employed	435	46	254	3 888	181	551	93	250	185	560	60	108
ROOM NIGHTS OCCUPIED ('000)												
1998												
March quarter	44.0	3.7	19.6	334.5	10.8	19.2	6.8	24.5	10.7	28.9	5.4	9.4
1999												
January	15.0	1.4	8.3	113.8	3.4	6.8	2.3	8.4	3.0	9.8	1.9	3.3
February	12.5	1.0	5.6	106.8	3.0	6.8	2.2	8.7	3.0	10.2	1.4	2.4
March	15.8	1.1	6.2	115.8	4.0	7.9	2.8	10.1	3.7	12.6	1.2	2.8
March quarter	43.3	3.5	20.0	336.4	10.4	21.5	7.2	27.1	9.7	32.6	4.5	8.5
ROOM OCCUPANCY RATES (%)												
1998												
March quarter	53.0	42.8	49.0	70.3	57.0	40.6	55.5	44.6	32.5	41.7	43.8	51.4
1999												
January	53.2	45.8	59.2	65.2	52.5	41.7	51.0	42.4	27.0	40.2	46.3	58.0
February	49.0	38.5	44.1	67.7	51.0	46.6	54.4	48.5	30.3	46.6	36.6	47.9
March	55.9	37.7	44.2	66.3	61.0	48.5	62.2	51.0	34.0	51.6	29.3	49.5
March quarter	52.8	40.7	49.3	66.4	54.9	45.6	55.9	47.3	30.4	46.1	37.4	52.0
GUEST NIGHTS ('000)												
1998												
March quarter	79.1	7.0	44.9	535.1	19.6	31.6	12.4	37.4	16.8	44.3	9.8	18.3
1999												
January	30.2	2.8	22.3	209.8	6.9	12.7	4.9	14.5	5.6	17.9	4.4	7.3
February	20.0	1.7	11.4	167.4	5.4	10.0	3.6	13.3	4.6	14.8	2.3	4.6
March	25.0	1.8	12.5	180.2	7.0	12.3	4.9	15.5	5.7	17.3	2.0	5.3
March quarter	75.2	6.3	46.2	557.4	19.3	35.0	13.4	43.2	15.9	50.1	8.6	17.3
GUEST ARRIVALS ('000)												
1998												
March quarter	50.3	5.1	25.6	216.1	12.2	22.1	8.9	25.5	10.5	29.5	5.7	9.3
1999												
January	19.6	1.9	12.2	85.1	3.6	7.9	3.1	9.9	4.0	11.9	2.0	3.8
February	13.4	1.3	7.2	72.7	3.2	7.1	2.6	8.2	3.0	9.3	1.4	2.9
March	16.4	1.4	7.3	78.0	3.7	8.0	3.2	10.0	3.5	11.0	1.3	3.2
March quarter	49.5	4.6	26.7	235.8	10.6	23.1	8.9	28.1	10.5	32.2	4.7	9.9
TAKINGS FROM ACCOMMODATION (\$'000)												
1998												
March quarter	2 566	209	1 412	32 586	747	1 139	452	1 556	817	1 637	264	626
1999												
January	985	80	667	10 859	251	432	166	544	250	598	121	252
February	761	55	431	10 570	212	407	148	539	237	606	79	187
March	965	63	466	11 656	284	485	190	651	285	719	73	215
March quarter	2 712	199	1 564	33 085	747	1 324	504	1 734	772	1 923	272	654

Period	South East	Goldfields	Midwest	Gascoyne	Pilbara	Kimberley	Perth	Peel	South West	Great Southern	Wheatbelt
ESTABLISHMENTS, CAPACITY AND EMPLOYMENT (number)											
March quarter 1998											
Establishments	10	22	24	9	18	22	93	4	51	19	22
Guest rooms	299	912	780	410	1 051	1 304	8 410	203	1 943	684	600
Bed spaces	883	2 385	2 025	1 166	2 248	3 604	22 524	635	5 995	1 935	1 464
Persons employed	149	451	347	155	503	593	5 712	109	1 141	290	235
March quarter 1999											
Establishments	10	22	24	9	18	26	97	5	52	19	22
Guest rooms	295	919	795	411	1 106	1 426	8 961	253	2 064	699	588
Bed spaces	881	2 400	2 064	1 146	2 519	4 195	24 637	937	6 389	1 997	1 432
Persons employed	133	424	346	180	476	629	5 863	122	1 299	276	214
ROOM NIGHTS OCCUPIED ('000)											
1998											
March quarter	15.5	43.5	31.8	12.5	44.9	34.5	527.8	11.7	103.1	28.9	18.2
1999											
January	5.6	12.9	10.7	4.5	12.4	11.7	172.5	5.5	40.0	11.4	4.8
February	5.4	14.2	9.3	4.4	15.1	10.1	171.4	3.8	32.4	9.1	5.5
March	4.5	14.7	9.1	4.6	16.8	15.3	185.4	4.0	35.7	9.4	6.5
March quarter	15.5	41.9	29.1	13.5	44.4	37.2	529.2	13.3	108.1	30.0	16.8
ROOM OCCUPANCY RATES (%)											
1998											
March quarter	57.7	52.9	45.3	33.8	47.5	29.4	69.7	64.2	59.3	46.9	34.1
1999											
January	61.2	45.4	43.3	35.6	36.2	26.5	62.1	70.5	62.5	52.8	26.3
February	65.2	55.2	42.0	38.4	48.8	25.3	68.3	53.7	56.0	46.5	33.6
March	49.0	51.7	37.0	36.0	49.1	34.7	66.7	50.6	55.8	43.6	35.7
March quarter	58.3	50.6	40.7	36.6	44.6	28.9	65.6	58.4	58.2	47.7	31.8
GUEST NIGHTS ('000)											
1998											
March quarter	30.3	63.1	50.2	21.0	55.1	59.9	861.3	19.8	217.1	53.4	27.6
1999											
January	12.0	20.5	20.1	8.9	17.8	23.1	318.8	14.4	93.2	25.2	7.7
February	9.2	18.7	14.7	6.8	18.7	16.4	278.2	7.4	62.0	16.4	8.0
March	7.2	19.9	14.3	7.1	21.4	25.7	295.6	7.3	68.2	15.1	8.9
March quarter	28.4	59.1	49.1	22.8	57.8	65.2	892.6	29.0	223.4	56.7	24.6
GUEST ARRIVALS ('000)											
1998											
March quarter	12.3	29.9	26.4	9.5	18.7	18.0	300.3	7.0	93.0	31.2	17.7
1999											
January	5.3	11.4	10.2	4.5	8.0	6.0	106.4	6.4	35.3	12.9	5.3
February	4.7	8.5	8.7	3.0	8.9	5.6	101.1	4.0	27.9	9.0	5.3
March	3.6	9.2	8.6	3.2	10.3	7.5	106.3	3.9	30.4	9.0	6.0
March quarter	13.6	29.1	27.4	10.6	27.2	19.0	313.9	14.3	93.6	31.0	16.5
TAKINGS FROM ACCOMMODATION (\$'000)											
1998											
March quarter	978	3 343	1 881	921	3 629	2 942	56 706	1 032	8 344	2 132	919
1999											
January	381	970	690	355	889	1 075	17 952	524	3 838	959	282
February	336	1 075	625	306	1 076	940	18 021	325	2 666	670	307
March	299	1 126	573	303	1 258	1 171	19 523	327	2 916	708	323
March quarter	1 016	3 170	1 888	963	3 222	3 186	55 496	1 177	9 420	2 336	912

Period	Greater Hobart	Southern	East Coast	Northern	Greater Launceston	North West	West Coast
ESTABLISHMENTS, CAPACITY AND EMPLOYMENT (number)							
March quarter 1998							
Establishments	37	14	5	2	30	32	10
Guest rooms	2 036	474	n.p.	n.p.	1 391	987	394
Bed spaces	5 832	1 619	n.p.	n.p.	4 487	2 839	1 124
Persons employed	1 689	271	n.p.	n.p.	1 148	562	227
March quarter 1999							
Establishments	38	14	4	2	30	32	9
Guest rooms	2 091	462	n.p.	n.p.	1 356	980	400
Bed spaces	6 035	1 590	n.p.	n.p.	4 401	2 841	1 150
Persons employed	1 678	256	n.p.	n.p.	1 155	573	208
ROOM NIGHTS OCCUPIED ('000)							
1998							
March quarter	136.9	26.7	n.p.	n.p.	85.0	49.1	24.3
1999							
January	43.5	9.5	n.p.	n.p.	25.8	14.2	7.8
February	44.7	8.5	n.p.	n.p.	27.2	16.1	7.6
March	49.2	8.5	n.p.	n.p.	27.9	17.7	8.9
March quarter	137.4	26.5	n.p.	n.p.	81.0	48.0	24.3
ROOM OCCUPANCY RATES (%)							
1998							
March quarter	74.7	62.7	n.p.	n.p.	67.9	55.3	68.5
1999							
January	67.1	66.2	n.p.	n.p.	61.5	46.9	62.8
February	76.3	65.5	n.p.	n.p.	71.7	58.7	68.1
March	75.9	59.6	n.p.	n.p.	66.3	58.1	71.4
March quarter	73.0	63.7	n.p.	n.p.	66.3	54.4	67.4
GUEST NIGHTS ('000)							
1998							
March quarter	239.7	57.8	n.p.	n.p.	161.6	88.9	48.9
1999							
January	81.0	23.0	n.p.	n.p.	56.0	28.8	16.1
February	73.6	17.1	n.p.	n.p.	48.6	27.7	13.9
March	80.2	16.7	n.p.	n.p.	50.8	30.8	16.7
March quarter	234.8	56.8	n.p.	n.p.	155.4	87.3	46.7
GUEST ARRIVALS ('000)							
1998							
March quarter	98.5	42.0	n.p.	n.p.	89.7	59.5	35.1
1999							
January	33.3	15.4	n.p.	n.p.	30.8	18.8	10.2
February	31.6	13.1	n.p.	n.p.	28.9	18.0	9.2
March	34.7	13.1	n.p.	n.p.	31.1	20.8	11.9
March quarter	99.6	41.7	n.p.	n.p.	90.9	57.6	31.3
TAKINGS FROM ACCOMMODATION (\$'000)							
1998							
March quarter	12 634	2 360	n.p.	n.p.	7 143	4 075	1 783
1999							
January	4 056	901	n.p.	n.p.	2 186	1 281	585
February	4 064	733	n.p.	n.p.	2 350	1 385	536
March	4 444	715	n.p.	n.p.	2 300	1 494	616
March quarter	12 564	2 349	n.p.	n.p.	6 836	4 161	1 737

Period	Darwin	Kakadu	Arnhem	Katherine	Tablelands	Petermann	Alice Springs	Macdonnell	Daly	Canberra
ESTABLISHMENTS, CAPACITY AND EMPLOYMENT (number)										
March quarter 1998										
Establishments	34	4	3	11	7	7	23	1	1	49
Guest rooms	2 570	n.p.	n.p.	557	250	n.p.	1 594	n.p.	n.p.	4 161
Bed spaces	7 369	n.p.	n.p.	1 677	665	n.p.	4 901	n.p.	n.p.	12 819
Persons employed	1 401	n.p.	n.p.	93	68	n.p.	757	n.p.	n.p.	2 591
March quarter 1999										
Establishments	34	3	3	9	7	7	23	1	1	54
Guest rooms	2 555	n.p.	n.p.	469	247	n.p.	1 603	n.p.	n.p.	4 648
Bed spaces	7 326	n.p.	n.p.	1 326	665	n.p.	4 924	n.p.	n.p.	14 028
Persons employed	1 430	n.p.	n.p.	166	65	n.p.	736	n.p.	n.p.	2 349
ROOM NIGHTS OCCUPIED ('000)										
1998										
March quarter	105.7	n.p.	n.p.	14.7	5.8	n.p.	58.7	n.p.	n.p.	242.8
1999										
January	29.3	n.p.	n.p.	3.5	1.9	n.p.	20.5	n.p.	n.p.	71.0
February	30.5	n.p.	n.p.	3.2	1.8	n.p.	20.5	n.p.	n.p.	76.8
March	37.5	n.p.	n.p.	4.6	2.0	n.p.	23.1	n.p.	n.p.	93.3
March quarter	97.3	n.p.	n.p.	11.3	5.6	n.p.	64.1	n.p.	n.p.	241.1
ROOM OCCUPANCY RATES (%)										
1998										
March quarter	46.1	n.p.	n.p.	45.8	25.8	n.p.	40.9	n.p.	n.p.	64.8
1999										
January	37.0	n.p.	n.p.	24.2	24.4	n.p.	41.3	n.p.	n.p.	49.3
February	42.6	n.p.	n.p.	24.4	25.9	n.p.	45.9	n.p.	n.p.	59.0
March	47.3	n.p.	n.p.	31.7	25.7	n.p.	46.7	n.p.	n.p.	64.8
March quarter	42.3	n.p.	n.p.	26.9	25.3	n.p.	44.6	n.p.	n.p.	57.6
GUEST NIGHTS ('000)										
1998										
March quarter	158.4	n.p.	n.p.	24.0	10.4	n.p.	97.8	n.p.	n.p.	415.7
1999										
January	49.5	n.p.	n.p.	6.3	3.9	n.p.	34.7	n.p.	n.p.	137.9
February	44.9	n.p.	n.p.	5.3	2.7	n.p.	31.3	n.p.	n.p.	118.1
March	56.7	n.p.	n.p.	7.8	3.1	n.p.	36.7	n.p.	n.p.	146.4
March quarter	151.1	n.p.	n.p.	19.4	9.7	n.p.	102.6	n.p.	n.p.	402.4
GUEST ARRIVALS ('000)										
1998										
March quarter	62.4	n.p.	n.p.	17.1	8.6	n.p.	47.2	n.p.	n.p.	189.9
1999										
January	19.2	n.p.	n.p.	5.1	3.4	n.p.	18.1	n.p.	n.p.	57.0
February	17.6	n.p.	n.p.	4.1	2.0	n.p.	18.2	n.p.	n.p.	55.7
March	22.7	n.p.	n.p.	5.9	2.5	n.p.	19.9	n.p.	n.p.	67.2
March quarter	59.5	n.p.	n.p.	15.0	7.9	n.p.	56.1	n.p.	n.p.	180.0
TAKINGS FROM ACCOMMODATION (\$'000)										
1998										
March quarter	8 982	n.p.	n.p.	836	331	n.p.	4 130	n.p.	n.p.	24 279
1999										
January	2 390	n.p.	n.p.	262	106	n.p.	1 486	n.p.	n.p.	6 905
February	2 530	n.p.	n.p.	222	101	n.p.	1 508	n.p.	n.p.	7 589
March	3 067	n.p.	n.p.	333	111	n.p.	1 678	n.p.	n.p.	9 227
March quarter	7 986	n.p.	n.p.	817	319	n.p.	4 671	n.p.	n.p.	23 721

EXPLANATORY NOTES

INTRODUCTION

1 This publication contains data for Australia and each State and Territory from the ABS quarterly Survey of Tourist Accommodation (STA).

SCOPE

2 The survey includes the following categories of establishments which provide predominantly short-term non-residential accommodation to the general public:

- *Hotels and resorts with facilities*—establishments licensed to operate a public bar and which provide accommodation on a room/suite basis, with a bath/shower and toilet in most guest rooms, but which do not have full cooking facilities (i.e. hot plates and oven/microwave) in most guest rooms;
- *Motels, private hotels and guest houses with facilities*—establishments not licensed to operate a public bar, and which provide accommodation on a room/suite basis, with a bath/shower and toilet in most guest rooms, but which do not have full cooking facilities (i.e. hot plates and oven/microwave) in most guest rooms;
- *Serviced apartments*—establishments which mostly comprise self-contained units at the same location, and which are available on a unit/apartment basis to the general public for a minimum of one night; the units should have full cooking facilities (i.e. hot plates and oven/microwave), refrigerator and bath/shower and toilet facilities; all bed linen and towels should be provided, and daily servicing (i.e. cleaning and bed making) must be available through the on-site management, although this service may not necessarily be used.

3 As a result of the separate classification of serviced apartments from the March quarter 1998, there have been several changes to definitions of accommodation units. Some units which were formerly in categories such as hotels, motels or holiday flats, units and houses are now classified as serviced apartments. A small number of establishments which were previously classified as motels have been reclassified as holiday flats, units and houses and are therefore no longer in scope of the quarterly STA.

4 The short-term non-residential accommodation which is in scope of this survey is accommodation which is not let out on a lease basis, and which is let out to guests who would generally, although not necessarily, stay for periods of less than two months.

5 Some establishments included in the survey also provide long-term residential accommodation. For hotels, motels and guest houses, the amount of such activity is considered to be insignificant and is included in the data presented in this publication. For serviced apartments, only short-term non-residential accommodation is included.

6 From the March quarter 1998, only those in-scope establishments with 15 or more rooms or units are covered by the survey. Data presented in this publication which relate to the 1997 calendar year have been recompiled on the new basis.

REGIONAL DATA

7 From the March quarter 1998, survey results are aggregated to Tourism Regions as defined by relevant State and Territory Tourist Commissions or equivalent organisations. Details of the composition of Tourism Regions, including maps, are available on request.

EXPLANATORY NOTES *continued*

FUTURE COLLECTION STRATEGY

- 8** As part of the future collection strategy of the STA, significant caravan parks, visitor hostels and remaining holiday flats, units and houses will be surveyed triennially, commencing with a year 2000 reference year.
- 9** Each year, accommodation counts of number of establishments and capacity data will also be compiled in respect of the previous scope of the survey (but recognising serviced apartments separately) as follows:
- hotels, motels and guest houses and serviced apartments with facilities and having five or more rooms;
 - holiday flats, units and houses (other than those included with serviced apartments) which are operated by owners, managers or real estate agents who have sole letting rights to at least five flats, units or houses for short term letting;
 - caravan parks; and
 - visitor hostels.
- 10** Some units will have been reclassified following the implementation of the new survey scope and definitions. As a result, data will not be comparable with previously published data for particular accommodation types.
- 11** These counts are expected to be published annually in a quarterly issue of *Tourism Indicators, Australia* (Cat. no. 8634.0).

UNPUBLISHED STATISTICS

- 12** The ABS may make available on request certain unpublished tourist accommodation statistics, including statistics for past quarters and for specific areas and more detailed information for specific data items. For example, detailed employment statistics showing the number of full-time, part-time or casual employees may be available. A charge may be made for this information.

RELATED PUBLICATIONS

- 13** Other ABS publications and products which may be of interest include:
- Directory of Tourism Statistics* (Cat. no. 1130.0) (irregular: latest issue; 1997)
 - Overseas Arrivals and Departures, Australia* (Cat. no. 3401.0) (issued monthly)
 - Tourism Indicators, Australia* (Cat. no. 8634.0) (issued quarterly)
 - Tourist Accommodation, Small Area Data* Standard Data Service (SDS) products for each State/Territory (except the ACT) (Cat. No. 8635.n.40.001) (issued quarterly).
- 14** Current publications produced by the ABS are listed in the *Catalogue of Publications and Products* (Cat. no. 1101.0). The ABS also issues the *Release Advice* (Cat. no. 1105.0) on Tuesdays and Fridays which lists publications to be released in the next few days. Both the Catalogue and Release Advice are available from any ABS office.

EFFECTS OF ROUNDING

- 15** Where figures have been rounded, discrepancies may occur between totals and the sums of the component items.

SYMBOLS AND OTHER USAGES

n.a.	not available
n.p.	not available for publication but included in totals where applicable
r	revised
..	not applicable
—	nil or rounded to zero

GLOSSARY

Average length of stay	Average length of stay is expressed in numbers of days and calculated by dividing <i>Guest nights</i> by <i>Guest arrivals</i> .
Bed spaces	Three-quarter beds are counted as one bed space; double beds as two bed spaces. Cots are excluded.
Capacity	Capacity in terms of <i>Guest rooms/units</i> or <i>Bed spaces</i> is the maximum number available to accommodate paying guests during the survey period. Capacity closed temporarily for seasonal reasons is included.
Establishments	The number of hotels, motels and guest houses and serviced apartments within the scope of the survey which operated for any part of the survey period, or which closed temporarily for the quarter for seasonal reasons.
Guest arrivals	The total number of paying guests counted only on the first night they stayed at the accommodation establishment during the survey period.
Guest rooms	The maximum number of rooms available at each establishment during the survey period for accommodating short-term paying guests. Units and apartments within serviced apartments are treated as rooms in these survey results.
Occupancy	Occupancy in terms of <i>Room nights</i> refers to the total number of nights each guest room or unit was occupied during the survey period. Occupancy in terms of <i>Guest nights</i> refers to the total number of paying guests counted on each night they stayed at the accommodation establishment during the survey period.
Occupancy rates	<i>Occupancy rates</i> represent occupancy expressed as a percentage of total capacity available during the survey period, e.g. for the period $\text{Room occupancy rate (\%)} = \frac{\text{Room nights occupied}}{(\text{Guest rooms}) \times (\text{No. of days in the period})} \times 100$ <p>providing that, for establishments closing (other than for seasonal reasons) or opening during the survey period, the denominator of the above expression includes only operating periods.</p>
Persons employed	The total number of persons working at each accommodation establishment at the end of the survey period (including working proprietors and those working on other than accommodation activities).
Room nights available	The number of guest rooms/units available multiplied by the number of days for which they were available during the survey period. For establishments closing (other than for seasonal reasons) or opening during this period, operating periods only are included.

Star grading The grading of hotels, motels and guest houses with facilities and serviced apartments based on the classification system used by members of the Australian Automobile Association (AAA). The gradings are allocated according to a points system based on the amenities and facilities available to guests. Details of the grading scheme are contained in the RACV-RAASA members' publication *Accommodation Australia*, or the individual tour guides produced by members of the AAA. For the purpose of classifying establishments to a star grading in this publication, 'half' star gradings are ignored (e.g. a two and a half star grading has been shown as two star).

Takings from accommodation Gross revenue from the provision of accommodation, including bed taxes. Takings from meals are excluded. Takings from accommodation for each month generally represent the takings received during that month. Where payments are received in advance of, or after, the provision of accommodation to guests, the monthly figure for takings from accommodation may not necessarily bear a direct relationship to the number of guests accommodated during the month.

SELF-HELP ACCESS TO STATISTICS

- CPI INFOLINE* For current and historical Consumer Price Index data, call 1902 981 074 (call cost 75c per minute).
- DIAL-A-STATISTIC* For the latest figures for National Accounts, Balance of Payments, Labour Force, Average Weekly Earnings, Estimated Resident Population and the Consumer Price Index call 1900 986 400 (call cost 75c per minute).
- INTERNET* www.abs.gov.au
- LIBRARY* A range of ABS publications is available from public and tertiary libraries Australia-wide. Contact your nearest library to determine whether it has the ABS statistics you require.

WHY NOT SUBSCRIBE?

- PHONE* +61 1300 366 323
- FAX* +61 03 9615 7848

CONSULTANCY SERVICES

ABS offers consultancy services on a user pays basis to help you access published and unpublished data. Data that is already published and can be provided within 5 minutes is free of charge. Statistical methodological services are also available. Please contact:

<i>INQUIRIES</i>	<i>City</i>	<i>By phone</i>	<i>By fax</i>
	Canberra	02 6252 6627	02 6207 0282
	Sydney	02 9268 4611	02 9268 4668
	Melbourne	03 9615 7755	03 9615 7798
	Brisbane	07 3222 6351	07 3222 6283
	Perth	08 9360 5140	08 9360 5955
	Adelaide	08 8237 7400	08 8237 7566
	Hobart	03 6222 5800	03 6222 5995
	Darwin	08 8943 2111	08 8981 1218

POST Client Services, ABS, PO Box 10, Belconnen ACT 2616

EMAIL client.services@abs.gov.au



2863500003999
ISSN 1031-0770

RRP \$18.50